



LAND CLEARING Tracked Carriers





5 MAKE THE DIFFERENCE

6 ABOUT FAE

8 TRACKED CARRIERS

12 PT-175

30 PT-300

52 PT-475





MAKE THE **DIFFERENCE**

At FAE, every machine, accessory and optional component is designed with utmost precision, the highest quality materials and the most advanced technology.

Each detail is designed to make the execution of the tasks as quick and efficient as possible and for the specific applications, conditions and environment where it will be carried out.

Every FAE machine and accessory was created to “make a difference” at work and, given the importance of many of the applications we work on, for the planet.

This is why each member of our team, each partner and customer works daily.



ABOUT **FAE**

With a range of over 90 products and 400 models, FAE can meet the most diverse demands for forestry, agricultural, road construction, building and demining applications. The FAE product range includes heads for tractors, excavators, skid steer loaders, special vehicles and tracked vehicles, with cabins or remote controlled. FAE was founded in 1989, and the company's main office is still located in Fondo, Italy. Production, sales, after-sales service and parts services are handled by our 4 production sites, the main office, 6 commercial branches and a network of authorized dealers all over the world.

GLOBAL QUALITY

Our precision design and production processes use advanced technologies to ensure long-term performance and reliability.

CONSTANT INNOVATION

We design unique and cutting-edge products based on customer's specific needs for solutions that pave the way to the future.

COMPLETE PRODUCT LINE

We offer an extensive product range and a high degree of customization to make each process more efficient, more productive, and easier.

TOTAL SUPPORT

We make our vast range of machines, dedicated accessories and components, as well as our technical assistance available worldwide.

LAND CLEARING **TRACKED CARRIERS**

FAE tracked carriers are great for forestry and agricultural work. The many interchangeable heads available make these carriers extraordinarily flexible. FAE PTs are designed and built to work under extreme conditions, with maximum productivity and reliability.





A TRACKED CARRIER THAT FITS ALL NEEDS

The FAE PT line offers three models, each with a wide selection of specific options to meet every operational need.



PT-175

The compact, powerful tracked carrier.



PT-300

The tracked carrier that is ready for anything.



PT-475

The tracked carrier for big challenges.

MODEL	100 hp	200 hp	300 hp	400 hp	500 hp
PT-175		173 hp			
PT-300			302 hp		
PT-475				475 hp	

FAE PT-175

THE COMPACT, POWERFUL TRACKED CARRIER.

The FAE PT-175 is a tracked carrier designed for forestry work when there is little space to maneuver anywhere that requires superior agility and efficiency. Manage wooded areas, create firebreaks, work near power lines, oil and gas pipelines. The sturdy construction with oscillating undercarriage is the best match for the 140/U mulcher. The exclusive Sonic system increases mulching efficiency to achieve maximum productivity with minimum fuel consumption. The engine power and low operating weight of the CAT C4.4 Acert makes it possible to work on steep slopes and soft ground. The hydraulic system guarantees reliability and efficiency. The spacious cab is unrivaled when it comes to comfort, ergonomics and operator safety.

POWERFUL

The flexibility and reliability of one of the world's most popular four-cylinder engines. The Caterpillar C4.4 Tier 4 Final/Stage V engine delivers 173 hp, with reliably superior performance and a global service network.

NIMBLE

Managing steep, soft, uneven ground with little space to maneuver is normal for FAE PT-175. Longitudinal slopes of 45° and transverse slopes of 32°. High power, low operating weight. Minimum pressure against the ground: 0.28 kg/cm².

TECHNOLOGICAL

High-tech body and soul. An integrated system developed by FAE to ensure maximum performance. With a network of sensors to monitor key operating parameters, everything in the PT-175 can be easily fine-tuned.

COMFORTABLE

Designed with total operator comfort in mind. ROPS/FOPS/OPS cabs - the industry benchmark. High Lexan™ windows. Ergonomic joysticks. Pneumatic seat. 7" color display to monitor and modify all operating functions.



PRODUCTIVE

PT-175 was created with a clear objective in mind: to optimize forestry work. The FAE 140U mulcher helps you easily manage woods and forests and create firebreaks near electric lines, oil and gas pipelines. The exclusive Sonic system increases mulching efficiency to achieve maximum productivity with minimum fuel consumption.

AN ENGINE THAT'S ALWAYS READY TO GO

You can count on the FAE PT-175 engine. The **Caterpillar C4.4 Acert** four-cylinder is a popular engine, highly respected worldwide. Equipped with twin turbochargers with after cooler, Acert technology and Common Rail injection, this engine delivers an impressive 173 hp. Efficient, reliable, with superb consumption/power ratio.

Compliance with the **Tier 4 Final/Stage V** standard is guaranteed with the combination of diesel particulate filter (DPF), selective catalytic reduction (SCR) and diesel oxidation catalyst (DOC) technologies.

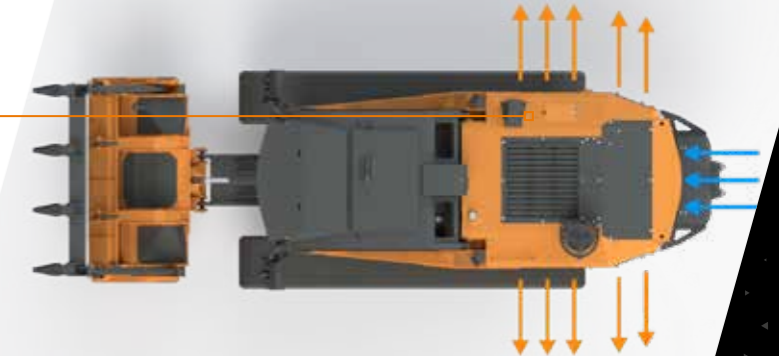
A combination that maximizes uptime and requires minimal maintenance over time, achieved by passive regeneration that does not require interrupting the work.

The 4.4-liter displacement and a cooling system designed specifically for the FAE PT-175 ensure peak performance in heavy-duty applications and when working in tropical climates.

The simple, uncluttered **internal layout** is synonymous of reliability



Optimized airflow for working in extreme conditions



Easy access to **filters** makes maintenance quick and easy



EFFICIENT, RELIABLE TRANSMISSION.

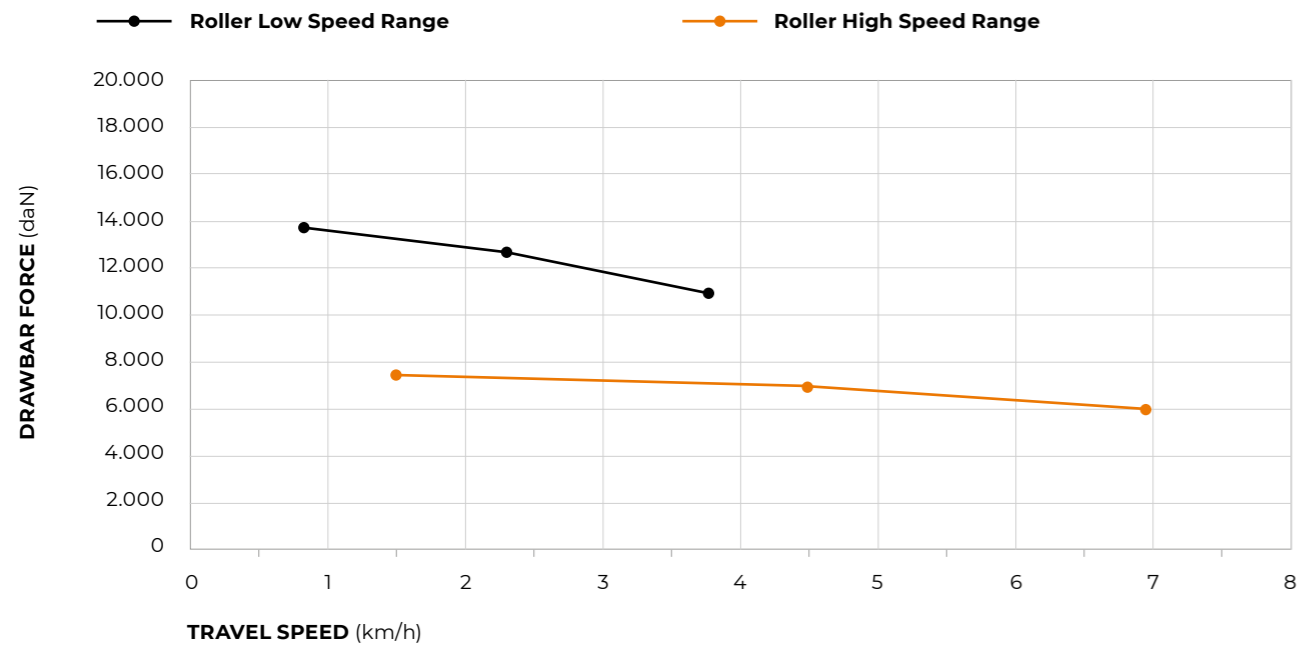
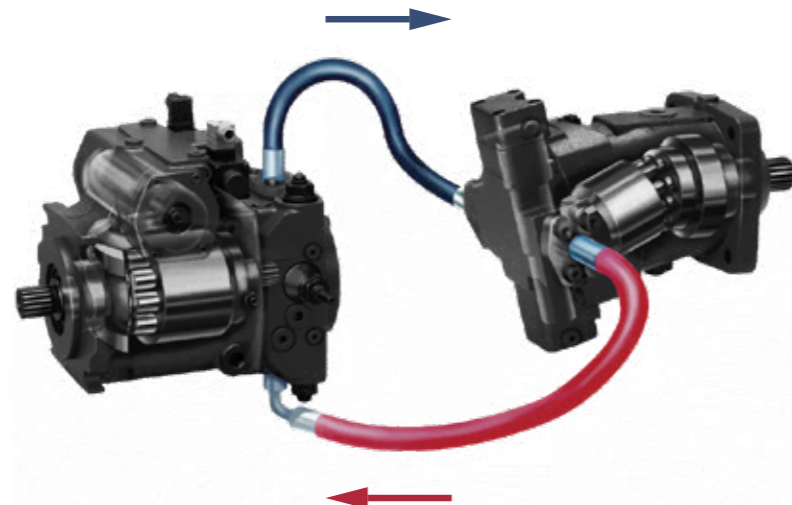
The transmissions designed for the FAE PT-175 are based on two fundamental concepts: technology and integration. **Electronically-controlled pumps and sensors and a dedicated control unit**, working together to deliver maximum performance. The systems are designed to enable the CAT C4.4 Acert engine to operate at optimal rpms at all times.

The FAE PT-175's **hydrostatic transmission** also serves to dampen operating loads. This ensures that

the carrier and its key components are subjected to less stress, reducing wear and tear. The end result is greater durability than a mechanical transmission.

The FAE PT-175's **integrated load control feature** optimizes power management, ensuring that the mulcher always operates at peak power while reducing forward speed as needed.

Diagram of the FAE PT-175 **hydrostatic transmission**: simple and effective



TRAVEL SPEED (km/h)

NOTE: Usable force will depend upon: machine weight, permitted traction, working duty cycle



- 1 Horn
- 2 High gear selector
- 3 Low gear selector
- 4 Variable gear speed increase / decrease
- 5 Windshield wipers / Pneumatic cleaning system activation

The traction force can be controlled precisely and safely with the **trackball on the joystick**

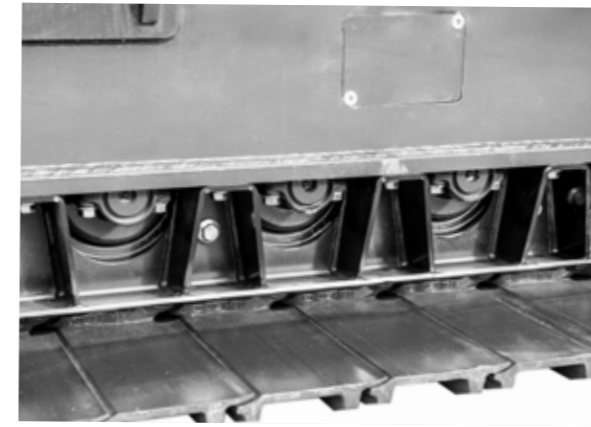
HEAVY DUTY UNDERCARRIAGE.

The FAE PT-175 undercarriage is designed to provide maximum operating performance and reliability, even in the most demanding conditions.

Prime quality **Berco components**. Chains with lifetime lubrication offer longer life than conventional chains as well as greater operator comfort. Solid, reliable dozer-type rollers. **Oscillating undercarriage technology** for superior traction and comfort. Two options available for roller guards to better adapt to different working environments.

Conventional geometry ensures a **low center of gravity** and provides **optimal contact between chain and drive wheel**. Two fundamental elements for the best possible work, even on slopes. The FAE PT-175 wheelbase also extends the area over which the load is distributed, which means **lower specific pressure against the ground**.

The frames of the PT-175 undercarriage are designed to withstand major stresses and make maintenance easier.

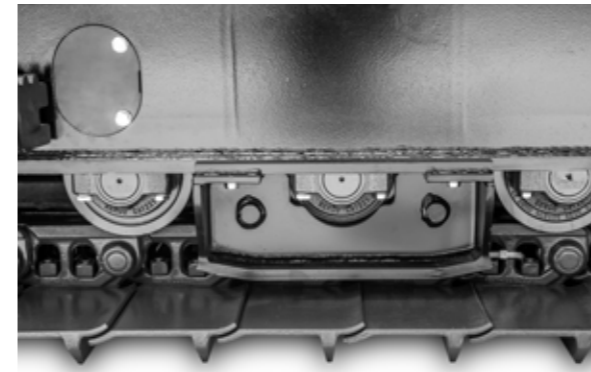


Solid rock guards

2 **slide** configurations to adapt to any terrain



Single grouser - 500 mm



Chain guide



Single grouser - 700 mm



Oscillating **undercarriage technology** boosts grip and comfort

A SERIOUSLY COMFORTABLE CAB.

The cab of the FAE PT-175 is designed for those who work in extreme conditions. It is ergonomic, soundproof and guarantees optimal visibility, making it an industry benchmark.

Joysticks built into the pneumatic suspension seat allow for easy, precise operation of the PT-175. The controls on the side console are distributed to make them user friendly, and the 7" color display keeps the essential carrier parameters in view at all times.

ROPS/FOPS/OPS certification meets the highest standards of operator safety, even in the most demanding applications. The air conditioning system vents located throughout the cabin provide all the comfort the operator needs, in hot or cold weather. An optional cabin pressurization system is also available.

The large, **12-mm thick, impact and scratch-resistant Lexan™ windows** provide excellent visibility. Powerful LED work lights offer broad coverage, ensuring precise, safe work in all conditions.

Each and every item in the cabin has been carefully **designed with ergonomics in mind.**



7" electronic color **display**



User-friendly side **console**



Powerful **air conditioning system**



Optional **rear view camera**



EASY TO USE, EASY TO MAINTAIN.

Everything about the FAE PT-175 is designed to be effortless, from operation to maintenance.

Access to the engine compartment is easier with the **large doors with shock-resistant closures**. The compartment is also protected by micro-

perforated plates that prevent material from getting inside. Accessing the filters, tanks and hydraulic system components is easier with the large engine compartment and its organized interior layout. The large doors and **tilting cab** ensure easy maintenance, whether checking fluid levels or running

routine checks and more. In addition, a **heavy duty kit** can be installed to add an extra degree of air filtration and extend the life of the engine air filter.

The PT-175's efficient cooling system comes standard with a **radiator with anti-clogging fins**

specially designed by FAE. It can also be integrated with reversible, proportional fans that ensure peak performance and maximize radiator core cleanliness. In fact, the fans are regulated by the machine's control unit, adjusting the tilt of the blades according to the operating temperature. This optimizes airflow and also saves fuel.



Level control is simplified by an organized layout (1)



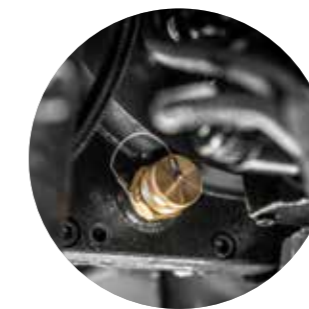
The **large rear doors** have safety catches (2)



Fluid level indicators are clear and easy to locate (3)



A **reversible fan** maximizes radiator efficiency (4)



Couplings make it possible to quickly **drain fluids** without leaks (5)



FORESTRY MULCHERS FOR SPECIAL VEHICLES

140/U

Heavy duty hydraulic mulcher for higher horse power carriers.

The 140/U is the smallest model in the product line. Its small size makes it ideal for clearing corridors in the woods for seismic surveys and oil exploration. The sturdy frame means it can be used with tracked vehicles.



Ø 25 cm max



BLADE FOR SPECIAL VEHICLES

Dozer Blade

Eight-way dozer blade with heavy-duty frame and 2400 mm working width. Designed for rough and finish grading in dirt, leveling and trenching. Hydraulic controlled angle and tilt. Angles 15° right or left off center. Tilts 10 degrees off horizontal both directions. Relief valves to protect the hydraulic angling system when the blade is overloaded.



Mechanical or hydraulic push frame (optional)

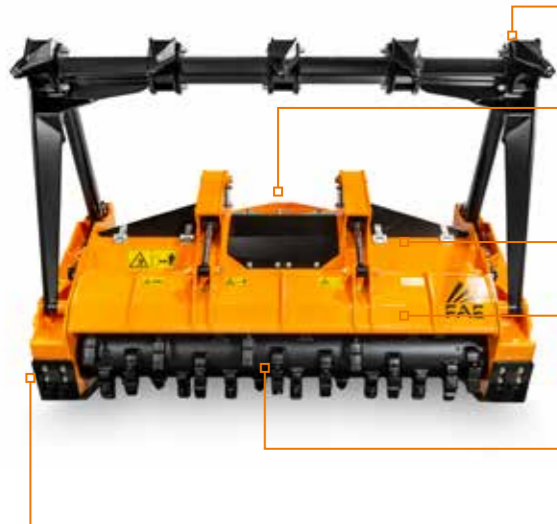
Customized attachment plate

Hydraulically controlled hood to adjust final product size

Ripper teeth on hydraulic door (optional)

Multiple tooth options

Adjustable skids



MODEL	140/U - 140	140/U - 175	140/U - 200
Head type	Mulcher	Mulcher	Mulcher
Working width (mm)	1407	1827	2067
Total width (mm)	1751	2171	2411
Weight (kg)	1560	1700	1800
Hydraulic motor type	1x - Sonic - 160 cc Danfoss	1x - Sonic - 160 cc Danfoss	1x - Sonic - 160 cc Danfoss
Rotor diameter (mm)	450	450	450
Max shredding diameter (mm)	250	250	250
No. teeth type C/3+C/3/SS	28+4	38+4	42+2
type I + C/3/SS	40+2	54+2	60+2
No. blades type BL + C/3/SS	22+2	30+2	34+2

Data refers to machine as standard. The technical data in this catalogue may be altered without prior notice.

ROTOR TYPE C



C/3 (standard) C/3/HD (option) BL Blade (option) STCL/3 (standard) K/3 (option)

ROTOR TYPE I



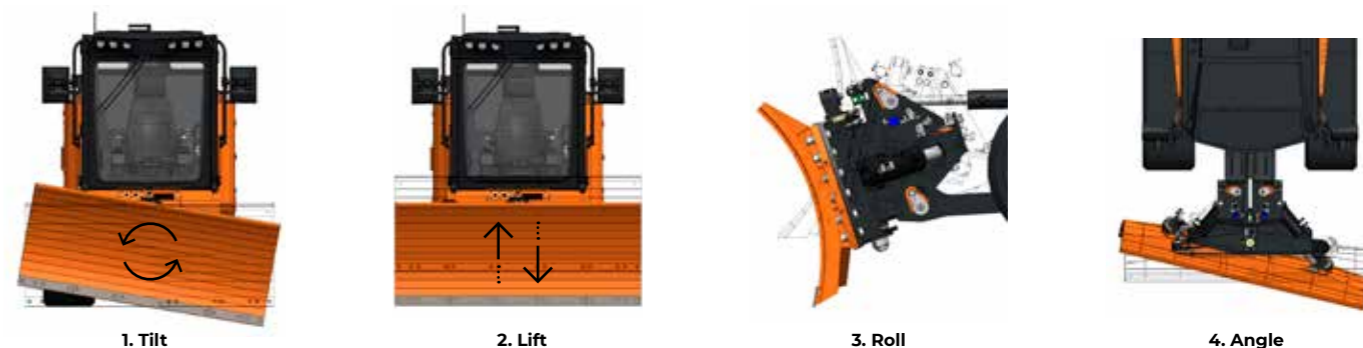
I (option)

ROTOR BL



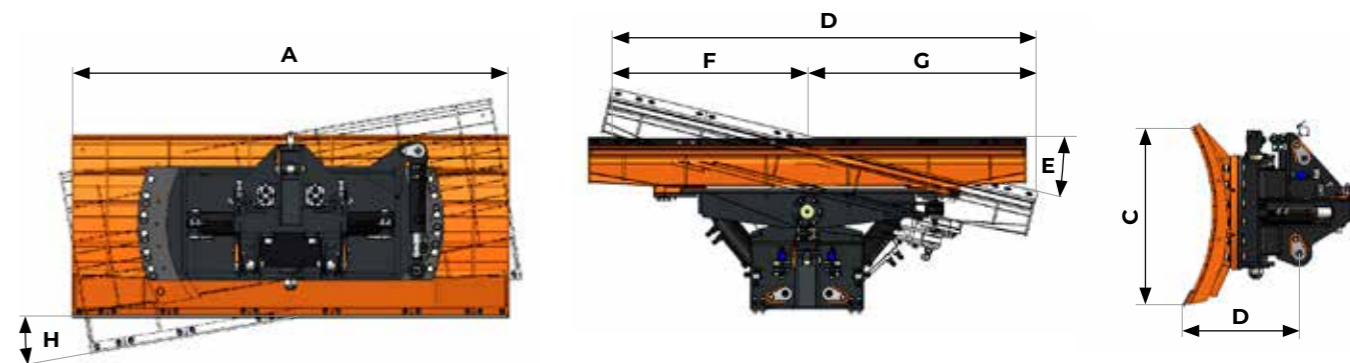
BL Blade (option) C/3/SS (left/right) (side scraper)

RANGE OF MOTION



The 8-way movement allows you to tilt (1), lift (2), roll (3) and angle (4) the blade, all from the cab or remote control of your PT-175!

TECHNICAL SPECIFICATIONS



MODEL	Dozer Blade
A. Blade width (mm)	2400
B. Working width (mm)	2320
C. Moldboard height (mm)	970
D. Overall depth with attachment plate (mm)	640
E. Blade angle	±15°
F. Center line to edge, when angled (mm)	1055
G. Center line to edge (mm)	1265
H. Blade tilt	±10°
Weight (kg)	1340
Moldboard thickness (mm)	15

Data refers to machine as standard. The technical data in this catalogue may be altered without prior notice.

PT-175

TECHNICAL SPECIFICATIONS.

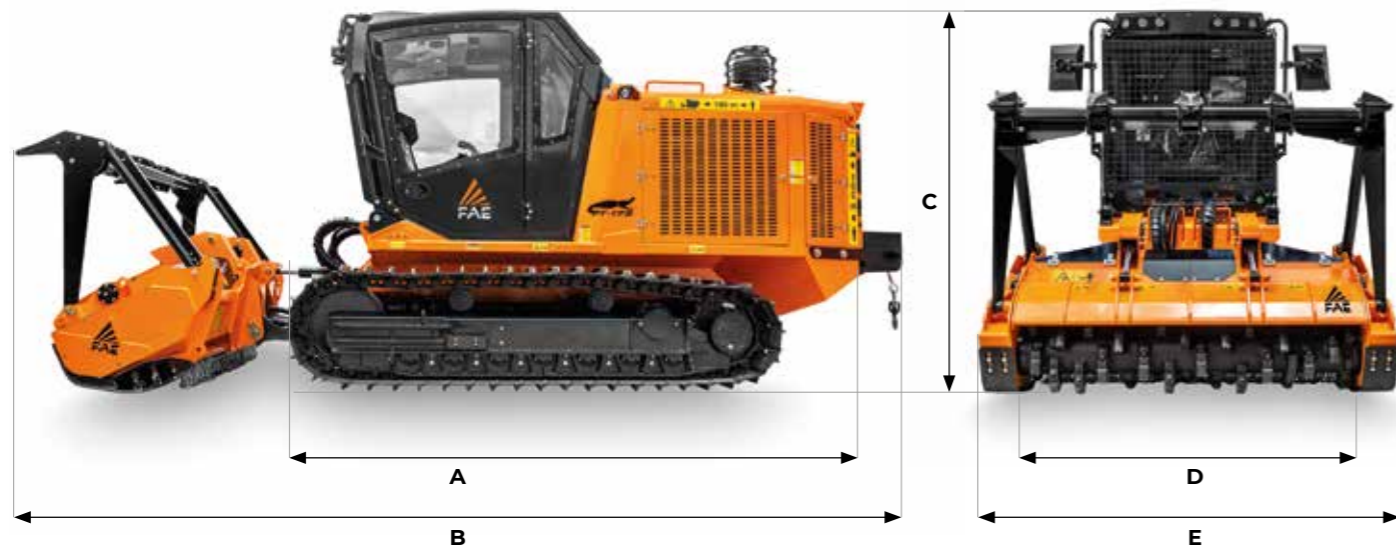


173 hp | TIER 4 FINAL / STAGE V

STANDARD EQUIPMENT

After-treatment system DOC/DPF/SCR	Comfort driver's seat (heated and air suspended)
Engine CAT C4.4 Acert turbocharged and after-cooled	Ergonomic joysticks controls
Hydrostatic tracks transmission	Heating & Air conditioning systems
Hydrostatic attachments transmission	Double emergency exit
Basic Load Control function	Lexan® cabin windshields
H-frame with oscillating pin attach system	Cabin air filtration dust proofing
Oscillating undercarriage	LCD color 7" display
Track chains lubricated, dozer-style rollers	MP3/CD bluetooth radio player
Combined aluminum cooler anti-clogging fins style	LED working lights
Cabin ROPS/FOPS/OPS-approved	Sonic System

DIMENSIONS



A Overall length without attachment	4518 mm	C Max height	2654 mm
B Transport length with 140/U attachment on ground and winch	6422 mm	D Overall track width	Track gauge 1250 mm + 500 mm pads Track gauge 1450 mm + 500 mm pads Track gauge 1450 mm + 700 mm pads
		E See attachments table	

PT 175 TIER 4 FINAL / STAGE V

Engine Gross Power	173 hp
Engine Emission	U.S. EPA Tier 4 Final / EU Stage V
Travel Pumps	2 - EP control - 60 cc - Danfoss
Travel Motors	2 - HY control - 60 cc - Rexroth
Max Travel Pressure	420 Bar
Attachment Pump	1 - EP control - 100 cc - Danfoss
Max Mulcher Pressure	350 Bar
Hydraulic Oil Tank Capacity	230 L
Fuel Tank Capacity	250 L
DEF AdBlue® Tank	19 L
Track Chain	155 Pitch - Lubricated - Berco
Lower Rollers	7 + 7 Single Flange
Carrier Rollers	2 + 2
Voltage	24 volt
Max forward speed	7 Km/h
Max reverse speed	7 Km/h
Gradeability	45° vertical, 32° lateral
Configuration tracks	500 mm pads / 700 mm pads (single grouser)
Operating weight	8589 Kg (std equipment, 500 mm pads) 8905 Kg (std equipment, 700 mm pads)
Ground Pressure	0,28 Kg/cm² (std equipment / 700 mm pads / 140/U-175)

ATTACHMENT

MODEL	140/U - 140	140/U - 175	140/U - 200
Head type	Mulcher	Mulcher	Mulcher
Working width (mm)	1407	1827	2067
Total width (mm)	1751	2171	2411
Weight (Kg)	1560	1700	1800
Hydraulic motor type	1x - Sonic - 160 cc Danfoss	1x - Sonic - 160 cc Danfoss	1x - Sonic - 160 cc Danfoss
Rotor diameter (mm)	450	450	450
Max shredding diameter (mm)	250	250	250
No. teeth type C/3+C/3/SS	28+4	38+4	42+2
type I + C/3/SS	40+2	54+2	60+2
No. blades type BL + C/3/SS	22+2	30+2	34+2

TEETH

140/U - 140			140/U - 175			140/U - 200		
ROTOR C	ROTOR I	ROTOR BL	ROTOR C	ROTOR I	ROTOR BL	ROTOR C	ROTOR I	ROTOR BL
C/3 (standard)	I (option)	BL Blade (option)	C/3 (standard)	I (option)	BL Blade (option)	C/3 (standard)	I (option)	BL Blade (option)
C/3/HD (option)			C/3/HD (option)			C/3/HD (option)		
BL Blade (option)			BL Blade (option)			BL Blade (option)		
STCL/3 (standard)			STCL/3 (standard)			STCL/3 (standard)		
K/3 (option)			K/3 (option)			K/3 (option)		
C/3/SS (left/right) (side scraper)	C/3/SS (left/right) (side scraper)	C/3/SS (left/right) (side scraper)	C/3/SS (left/right) (side scraper)	C/3/SS (left/right) (side scraper)	C/3/SS (left/right) (side scraper)	C/3/SS (left/right) (side scraper)	C/3/SS (left/right) (side scraper)	C/3/SS (left/right) (side scraper)

OPTIONS

OPTIONS

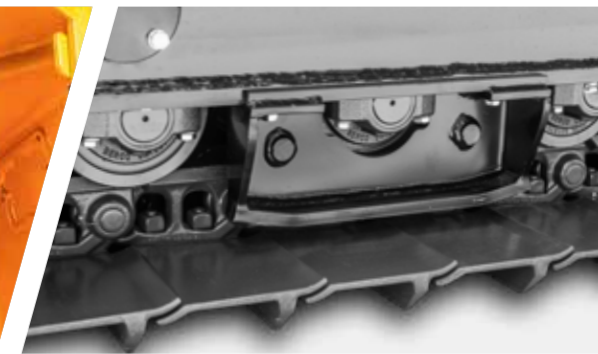
Rear winch - rated towing capacity: 6t	Chain guides
Protective roof	Rock guards
Cabin pressurization system	Proportional and reversible radiator fan
Protective Windshield Grill	Ejector (heavy duty filtration package)
Rear view camera with additional LCD display (visibility package)	Drainage filter (heavy duty filtration package)
Additional lighting package (visibility package)	Pre-heating system for engine and hydraulic oil
Service light (visibility package)	Air shut-off system
Oil top-off pump (service package)	



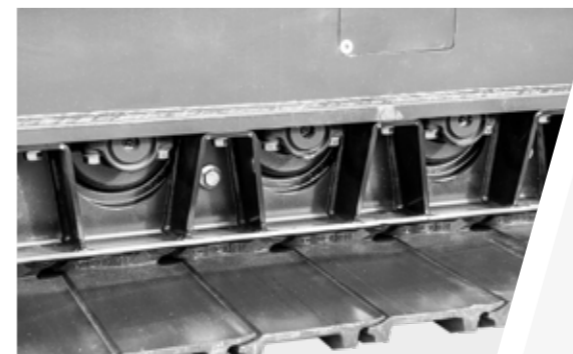
Service light (visibility package)



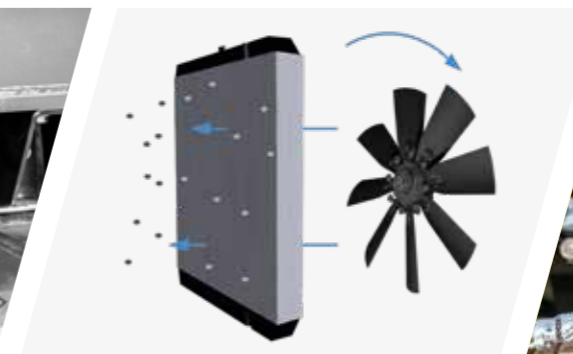
Oil top-off pump (service package)



Chain guides



Rock guards



Proportional and reversible radiator fan



Ejector (heavy duty filtration package)



Rear winch - rated towing capacity: 6t



Canopy



Cabin pressurization system



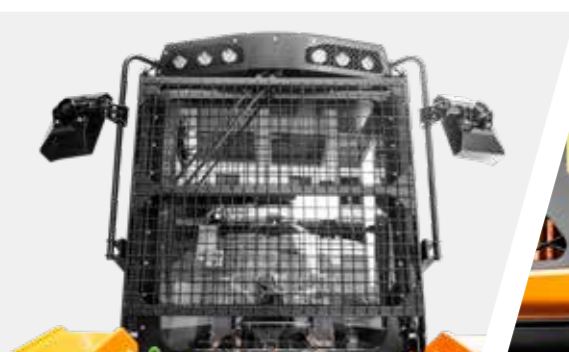
Drainage filter (heavy duty filtration package)



Pre-heating system for engine and hydraulic oil



Air shut-off system



Protective Windshield Grill



Rear view camera with additional LCD display (visibility package)



Additional lighting package (visibility package)

FAE PT-300

THE TRACKED CARRIER THAT IS READY FOR ANYTHING.

The FAE PT-300 is the ideal tracked carrier for the most difficult tasks, whether managing woods and forests or creating firebreaks near electrical lines, oil and gas pipelines. Its solid structure with oscillating undercarriage make it compatible with a wide variety of FAE hydraulic units: forestry mulchers, cutters, stone crushers, stump cutters and dozer blades. The high-power CAT C7.1 Acert straight-six engine with low operating weight makes it possible to work on steep slopes and soft ground. The hydraulic system guarantees reliability and efficiency. The spacious cab is unrivaled when it comes to comfort, ergonomics and operator safety.

POWERFUL

The flexibility and reliability of one of the world's most widely used six-cylinder engines. The Caterpillar C7.1 Tier 4 Final/ Stage V engine delivers 302 hp, while the Tier 3/Stage III A version provides 275 hp. Always top-notch performance supported by a global service network.

NIMBLE

The FAE PT-300 takes working on steep, soft, uneven and swampy terrains in stride. Longitudinal slopes of 45° and transverse slopes of 35°. High power, low operating weight. Minimum pressure against the ground: 0.29 kg/cm².

TECHNOLOGICAL

High-tech body and soul. An integrated system developed by FAE to ensure maximum performance. With a network of sensors to monitor key operating parameters, everything in the PT-300 can be easily fine-tuned.

COMFORTABLE

Designed with total operator comfort in mind. ROPS/FOPS/OPS cabs - the industry benchmark. High Lexan™ windows. Ergonomic joysticks. Pneumatic seat. 7" color display to monitor and modify all operating functions.



VERSATILE

Born flexible. The construction features of the FAE PT-300 enable it to accommodate forestry mulchers, cutters, stone crushers, stump cutters and dozer blades. Always the ideal configuration to manage woods and forests as well as create firebreaks near electrical lines, oil and gas pipelines.

AN ENGINE THAT'S ALWAYS READY TO GO

You can count on the FAE PT-300 engine. The **Caterpillar C7.1 Acert** six-cylinder is one of the world's most popular and highly respected engines. Equipped with twin turbochargers with after cooler and Acert technology, the Tier 4 Final/Stage V version of this engine delivers an impressive 302 hp. Efficient, reliable, with superb consumption/power ratio.

Compliance with the **Tier 4 Final/Stage V** standard is guaranteed with the combination of diesel particulate filter (DPF), selective catalytic reduction (SCR) and diesel oxidation catalyst (DOC) technologies.

A combination that maximizes uptime and requires minimal maintenance over time, achieved by passive regeneration that does not require interrupting the work.

The FAE PT-300 is also available in a **Tier 3 / Stage III A** version for emission-free markets, rated at 275 hp.

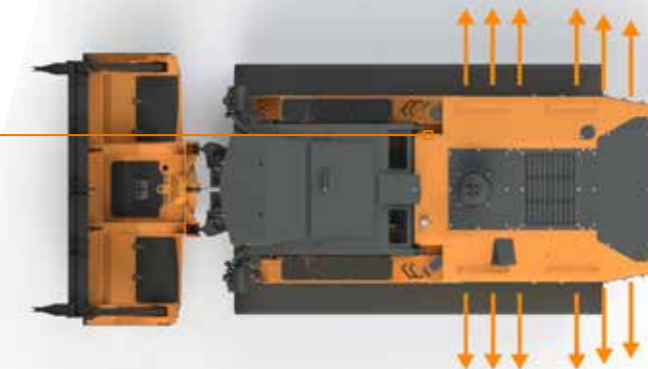
The generous 7-liter displacement and a cooling system designed specifically for the FAE PT-300 ensure that both configurations can offer peak performance in both heavy-duty applications and when working in tropical climates.



Engine
Tier 4 Final / Stage V



The simple, uncluttered **internal layout** is synonymous of reliability



Optimized airflow for working in extreme conditions



Easy access to **filters** makes maintenance quick and easy

EFFICIENT, RELIABLE TRANSMISSION.

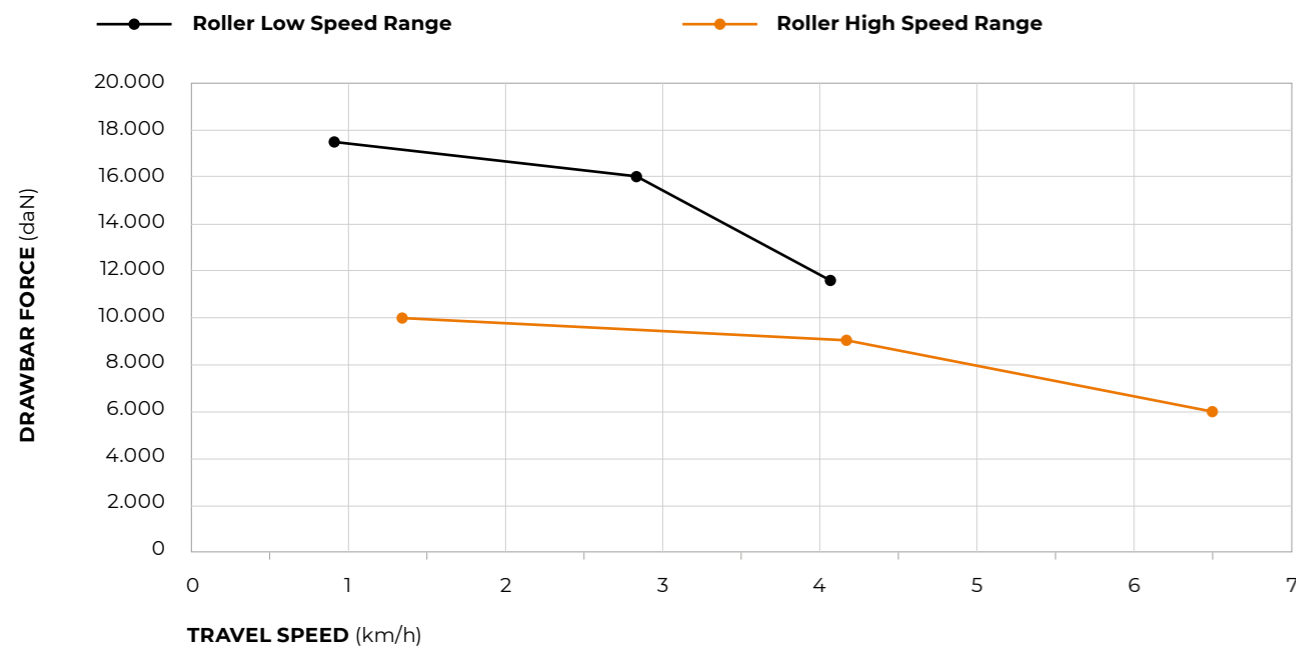
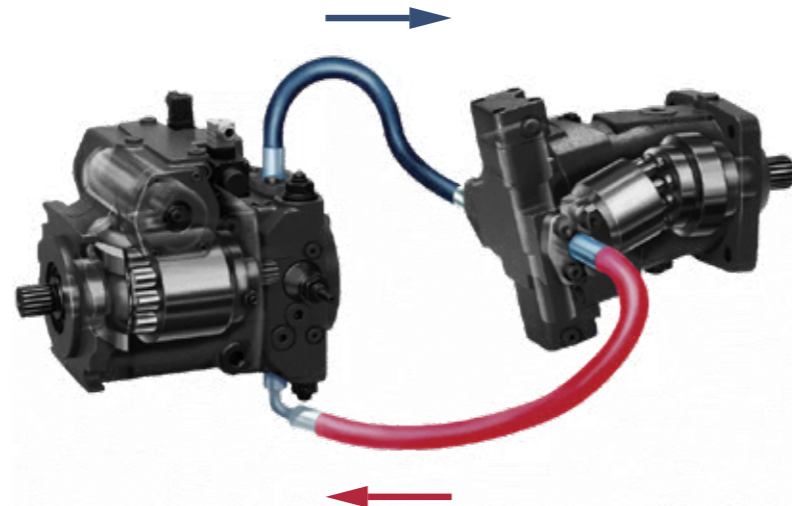
The transmissions designed for the FAE PT-300 are based on two fundamental concepts: technology and integration. **Electronically-controlled pumps and sensors and a dedicated control unit**, working together to deliver maximum performance. The systems are designed to enable the CAT C7.1 Acert engine to operate at optimal rpms at all times.

The FAE PT-300's **hydrostatic transmission** also serves to dampen operating loads. This ensures that

the carrier and its key components are subjected to less stress, reducing wear and tear. The end result is greater durability than a mechanical transmission.

An added benefit of the FAE PT-300's hydrostatic transmission is that they can accommodate a **wide variety of dedicated FAE equipment** such as forestry mulchers, stump cutters, stump grinders and dozer blades.

Diagram of the FAE PT-300 **hydrostatic transmission**: simple and effective



TRAVEL SPEED (km/h)

NOTE: Usable force will depend upon: machine weight, permitted traction, working duty cycle



- 1 Horn
- 2 High gear selector
- 3 Low gear selector
- 4 Variable gear speed increase / decrease
- 5 Windshield wipers / Pneumatic cleaning system activation

The traction force can be controlled precisely and safely with the **trackball on the joystick**

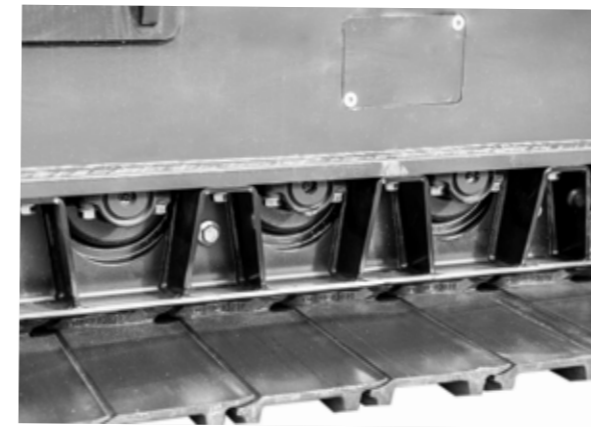
HEAVY DUTY UNDERCARRIAGE.

The FAE PT-300 undercarriage is designed to provide maximum operating performance and reliability, even in the most demanding conditions.

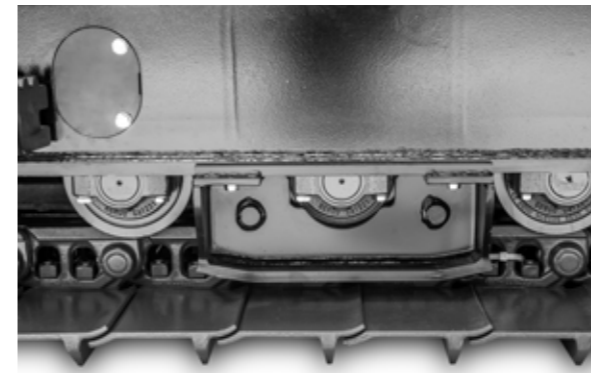
Prime quality **Berco components**. Chains with lifetime lubrication offer longer life than conventional chains as well as greater operator comfort. Solid, reliable dozer-type rollers. Oscillating undercarriage technology for superior traction and comfort. Two options available for roller guards to better adapt to different working environments.

Conventional geometry ensures a **low center of gravity** and provides **optimal contact between chain and drive wheel**. Two fundamental elements for the best possible work, even on slopes. The FAE PT-300 wheelbase also extends the area over which the load is distributed, which means **lower specific pressure against the ground**.

The frames of the PT-300 undercarriage are designed to withstand major stresses and make maintenance easier.



Solid **rock guards**



Chain **guide**

3 **slide** configurations to adapt to any terrain



Double grouser - **800 mm**



Single grouser - **660 mm**



Single grouser - **800 mm**



Oscillating **undercarriage technology** boosts grip and comfort

A SERIOUSLY COMFORTABLE CAB.

The cab of the FAE PT-300 is designed for those who work in extreme conditions. It is ergonomic, soundproof and guarantees optimal visibility, making it an industry benchmark.

Joysticks built into the pneumatic suspension seat allow for easy, precise operation of the PT-300. The controls on the side console are distributed to make them user friendly, and the 7" color display keeps the essential carrier parameters in view at all times.

ROPS/FOPS/OPS certification meets the highest standards of operator safety, even in the most demanding applications. The air conditioning system vents located throughout the cabin provide all the comfort the operator needs, in hot or cold weather. An optional **cabin pressurization system** is also available.

The large, **12-mm thick, impact and scratch-resistant Lexan™ windows** provide excellent visibility. Powerful LED work lights offer broad coverage, ensuring precise, safe work in all conditions.

Each and every item in the cabin has been carefully **designed with ergonomics in mind.**



7" electronic color **display**



User-friendly side **console**



Powerful **air conditioning system**



Optional **rear view camera**



EASY TO USE, EASY TO MAINTAIN.

Everything about the FAE PT-300 is designed to be effortless, from operation to maintenance.

Access to the engine compartment is easier with the **large doors with shock-resistant closures**. The compartment is also protected by micro-perforated plates that prevent material from getting

inside. Accessing the filters, tanks and hydraulic system components is easier with the large engine compartment and its organized interior layout. The large doors and **tilting cab** ensure easy maintenance, whether checking fluid levels or running routine checks and more. A **powerful air compressor comes standard for daily cleaning**. In addition, a **heavy**

duty kit can be installed to add an extra degree of air filtration and extend the life of the engine air filter.

The PT-300's efficient cooling system comes standard with a **radiator combined with anti-clogging fins** specially designed by FAE. It can also be integrated with reversible, proportional fans that ensure peak

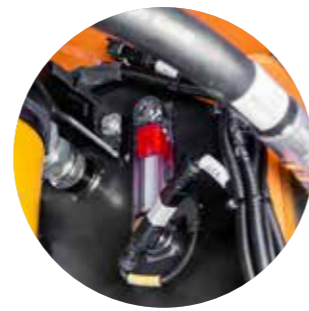
performance and maximize radiator core cleanliness. In fact, the fans are regulated by the machine's control unit, adjusting the tilt of the blades according to the operating temperature. This optimizes airflow and also saves fuel.



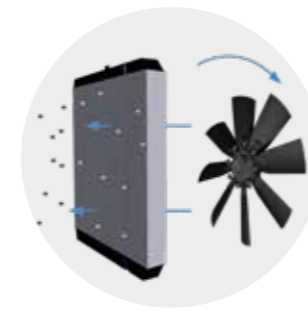
Level control is simplified by an organized layout (1)



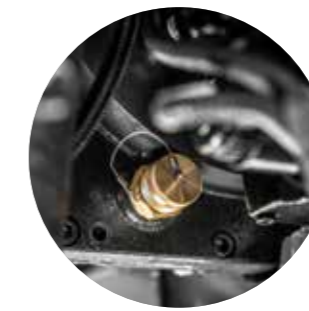
The **large rear doors** have safety catches (2)



Fluid level indicators are clear and easy to locate (3)



A **reversible fan** maximizes radiator efficiency (4)



Couplings make it possible to quickly **drain fluids** without leaks (5)



The **air compressor** makes daily cleaning easier



FORESTRY MULCHERS FOR SPECIAL VEHICLES

200/U

Heavy duty hydraulic mulcher for higher horse power carriers.

The 200/U combines compact maneuverability with the performance of larger machines. It is strong and highly productive for mulching bushes, branches and trees up to 35 cm in diameter.



Ø 35 cm max



FORESTRY MULCHERS FOR SPECIAL VEHICLES

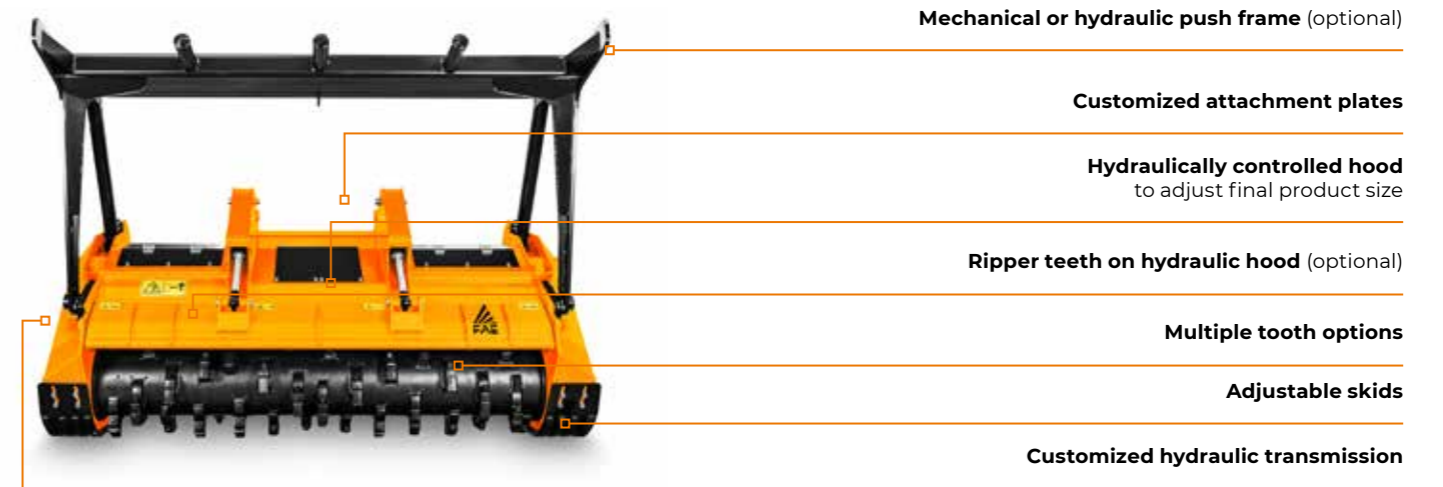
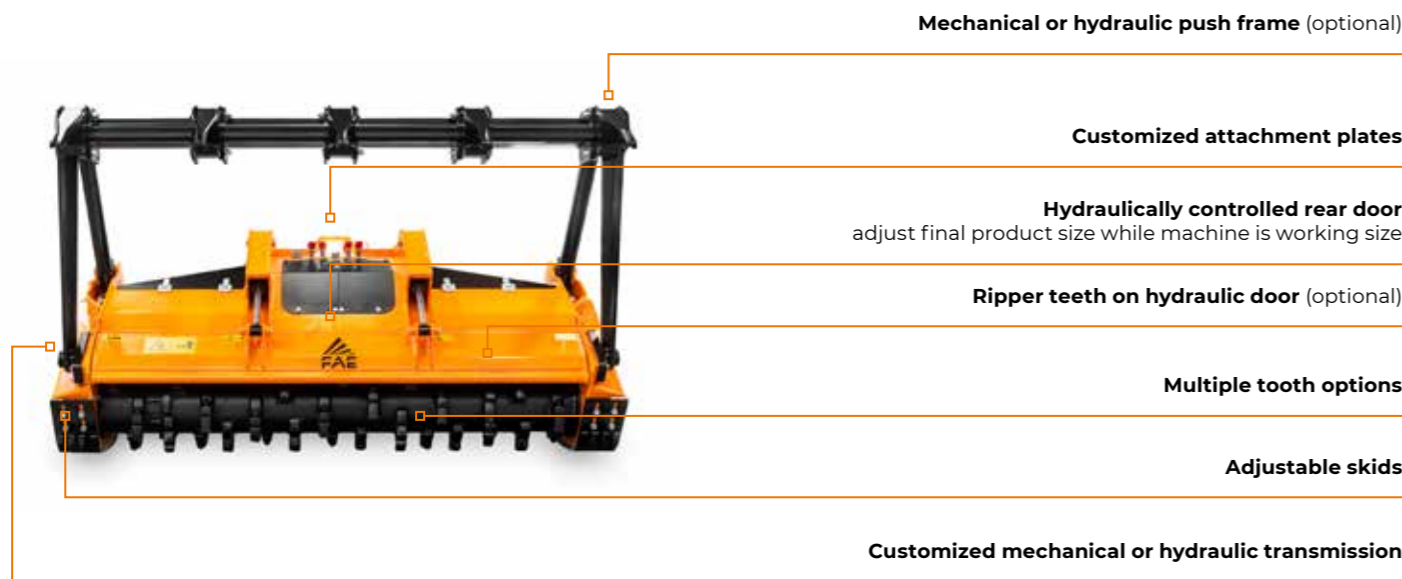
300/U

Heavy duty hydraulic mulcher for higher horse power carriers.

The 300/U mulcher is highly productive, strong, and lightweight, with a fixed-teeth rotor that lets it mulch plants and trunks up to 40 cm in diameter. It may be customized to meet specific needs.



Ø 40 cm max



MODEL	200/U - 200	200/U - 210	200/U - 225
Head type	Mulcher	Mulcher	Mulcher
Working width (mm)	2064	2150	2304
Total width (mm)	2464	2560	2704
Weight (kg)	2960	2820	3120
Hydraulic motor type	2x - VT - 110 cc Danfoss	2x - VT - 110 cc Danfoss	2x - VT - 110 cc Danfoss
Rotor diameter (mm)	500	500	500
Max shredding diameter (mm)	350	350	350
No. teeth type C/3+C/3/SS	42+2	44+2	46+2
type STCL/3+C/3/SS	42+2	44+2	46+2

Data refers to machine as standard. The technical data in this catalogue may be altered without prior notice.

MODEL	300/U - 200
Head type	Mulcher
Working width (mm)	2064
Total width (mm)	2494
Weight with C-type (kg)	3500
Weight with B-type (kg)	3780
Hydraulic motor type	2x - VT - 110 cc Danfoss
Rotor diameter (mm)	595
Max shredding diameter (mm)	400
No. teeth type B/3 + C/3/SS	72+2
type C/3+C/3/SS	44+2

Data refers to machine as standard. The technical data in this catalogue may be altered without prior notice.

ROTOR TYPE C



ROTOR TYPE B



ROTOR TYPE C



STUMP CUTTERS FOR SPECIAL VEHICLES

300/SC

Hydraulic stump cutters for higher horse power carriers.

The 300/SC can shred large stumps and roots up to 50 cm in diameter and 100 cm deep. The belt drive guarantees uniform shredding depth and less tooth wear with every use.



Ø 50 cm max



Depth 100 cm



STONE CRUSHERS FOR SPECIAL BUILT CARRIERS

RSL/PM

Rock shredder and stone crusher for hydraulic applications.

RSL/PM is a multi-purpose machine suitable for grinding rocks, asphalt and crushing stones. The two speed reduction gear allows the rotor to constantly operate in reduced speed conditions, while the radial motors enable the operator to set the speed.



Depth 27 cm



Larger cylinders for side swing

Hydraulic motor with relief valve

Single belt transmission

Bolt-on chains/protection plates deflects debris



Customized attachment plate (optional)

Hydraulically controlled hood to adjust final product size

Variable manual displacement hydraulic motor

MODEL	300/SC
Head type	Stump cutter
Working width (mm)	156
Total width (mm)	700
Weight (kg)	2100
Hydraulic motor type	1x - 250 cc Danfoss
Rotor diameter (mm)	1020
Max working depth (mm)	1000
Max shredding diameter (mm)	500
No. teeth type M1+M2+M3+M4	24+4+24+4

Data refers to machine as standard. The technical data in this catalogue may be altered without prior notice.

MODEL	RSL/PM-200	RSL/PM-225
Head type	Stone crusher	Stone crusher
Working width (mm)	1960	2200
Total width (mm)	2360	2560
Weight (kg)	3360	3560
Hydraulic motor type	2x - 250 cc Danfoss	2x - 250 cc Danfoss
Rotor diameter (mm)	600	600
Max working depth (mm)	270	270
No. teeth type R+R/HD 65	154+16	154 +16
type G/3 +STC/3/FP	72+6	72+6

Data refers to machine as standard. The technical data in this catalogue may be altered without prior notice.

ROTOR DISC



M1 (standard)



M3 (standard)



M4 (standard)



M2 (standard)

ROTOR TYPE G



G/3 (standard)



G/3/HD (option)



Adapter G/3 R 44 (option)

ROTOR TYPE R



R 65 (standard)



R/HD 65 (option)



R 44 (option)



Adapter R 65 (option)



STC/3/FP (side scraper)



R/HD 65 (side scraper)

FORESTRY TILLERS FOR SPECIAL VEHICLES

200/S

Universal hydraulic tiller for higher horse power carriers.

The 200/S is lightweight and comes in different widths, making it perfect for a wide range of vehicles. The gear drive lets the rotor work at a slower speed than conventional belt-driven forestry mulchers.



Ø 30 cm max



Depth 30 cm



BLADE FOR SPECIAL VEHICLES

Dozer Blade

Eight-way dozer blade with heavy-duty frame and 2400 mm working width. Designed for rough and finish grading in dirt, leveling and trenching. Hydraulic controlled angle and tilt. Angles 15° right or left off center. Tilts 10 degrees off horizontal both directions. Relief valves to protect the hydraulic angling system when the blade is overloaded.



Customized attachment plate (optional)

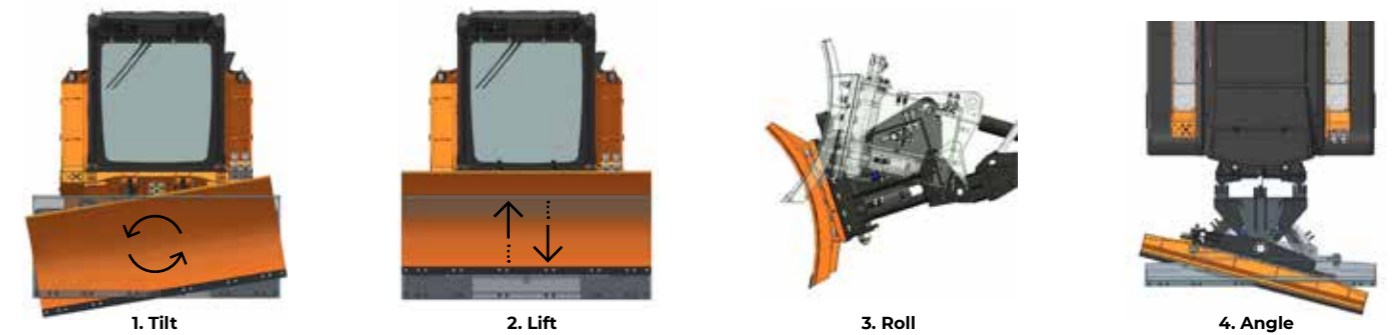
Hydraulically controlled hood to adjust final product size

180 cc hydraulic motor

Dual transmission with side gearbox



RANGE OF MOTION



The 8-way movement allows you to tilt (1), lift (2), roll (3) and angle (4) the blade, all from the cab or remote control of your PT-300!

MODEL	200/S - 200	200/S - 225	200/S - 250
Head type	Tiller	Tiller	Tiller
Working width (mm)	2080	2320	2560
Total width (mm)	2420	2662	2902
Weight (kg)	2950	3162	3400
Hydraulic motor type	2x - 180 cc Bosch Rexroth	2x - 180 cc Bosch Rexroth	2x - 180 cc Bosch Rexroth
Rotor diameter (mm)	590	590	590
Max working depth (mm)	300	300	300
Max shredding diameter (mm)	300	300	300
No. teeth type B/3+C/SS	74+4	82+4	96+4
type G/3+C/SS	74+4	82+4	96+4

Data refers to machine as standard. The technical data in this catalogue may be altered without prior notice.

ROTOR TYPE B



B/3 (standard)



B/3/HD (option)



G/3 (option)

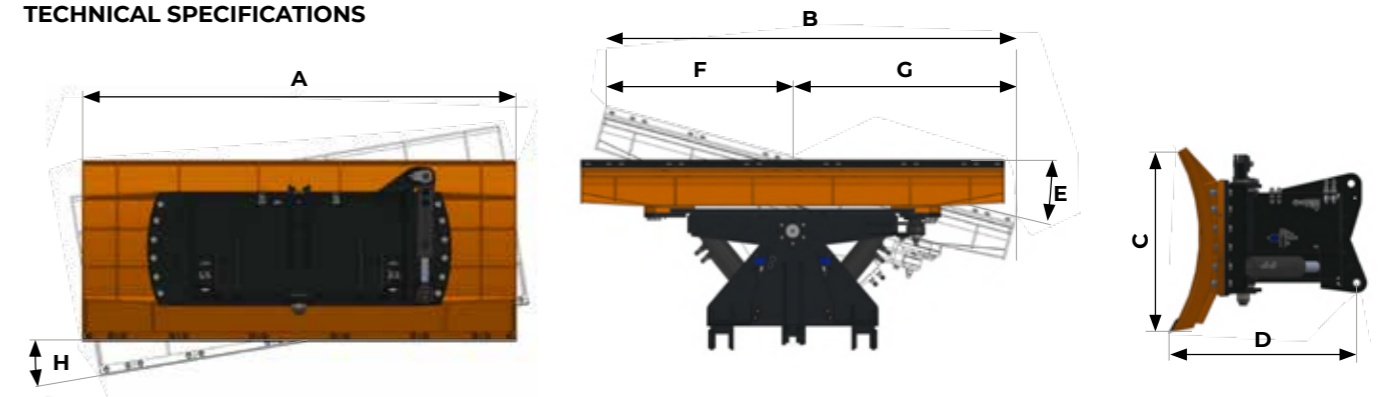


G/3/HD (option)



C/SS (side scraper)

TECHNICAL SPECIFICATIONS



MODEL	Dozer Blade
A. Blade width (mm)	2400
B. Working width (mm)	2320
C. Moldboard height (mm)	970
D. Overall depth with attachment plate (mm)	1020
E. Blade angle	±15°
F. Center line to edge, when angled (mm)	1055
G. Center line to edge (mm)	1265
H. Blade tilt	±10°
Weight (kg)	1400
Moldboard thickness (mm)	15

Data refers to machine as standard. The technical data in this catalogue may be altered without prior notice.

PT-300

TECHNICAL SPECIFICATIONS.

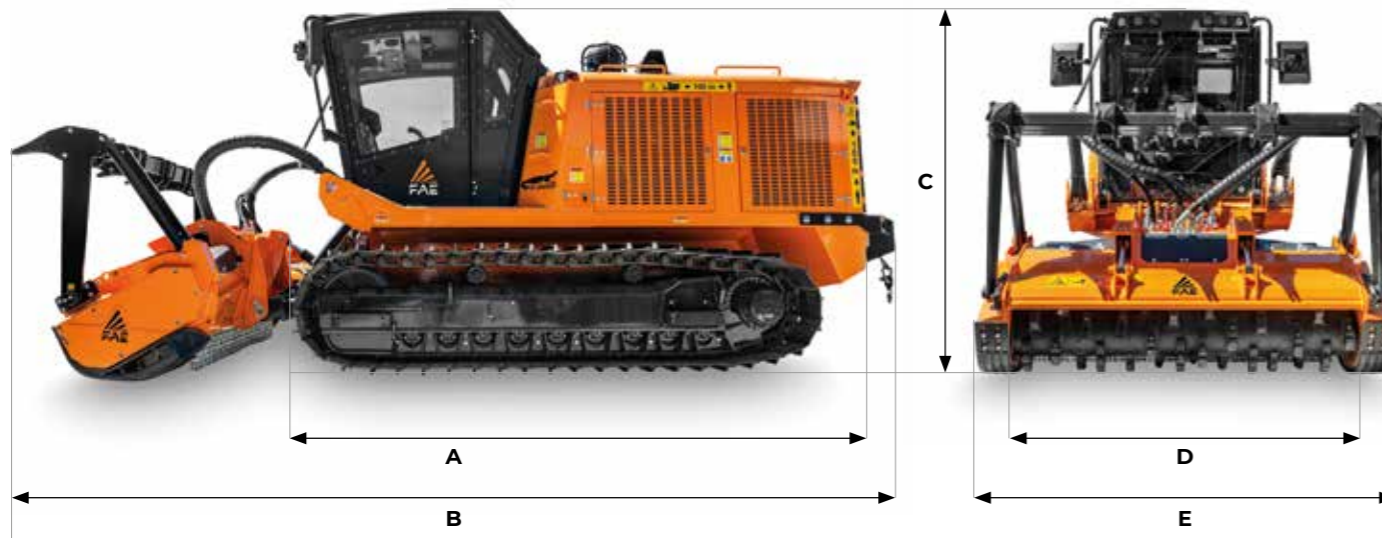


275 hp | CAT ENGINE | TIER 3 / STAGE III A
302 hp | CAT ENGINE | TIER 4 FINAL / STAGE V

STANDARD EQUIPMENT

Engine CAT C7.1 Acert turbocharged and after-cooled	Ergonomic joysticks controls
After-treatment system DOC/DPF/SCR (PT-300 T4F)	Heating & Air conditioning systems
Hydrostatic tracks transmission	Double emergency exit and roof escape external access handle
Hydrostatic attachments transmission	Lexan® cabin windshields (full equipped 12 mm)
H-frame with fixed pin attach system	Cabin air filtration dust proofing
Oscillating undercarriage	LCD color 7" display
Track chains lubricated, dozer-style rollers	MP3/CD bluetooth radio player
Combined aluminum cooler anti-clogging fins style	LED working lights
Cabin ROPS/FOPS/OPS-approved	Air compressor system
Comfort driver's seat (heated and air suspended)	

DIMENSIONS



A Overall length without attachment	4950 mm	C Max height	2785 mm
B Transport length with 200/U attachment on ground and winch	6900 mm	D Overall track width	2360 mm (660 mm pads) 2500 mm (800 mm pads)
		E See attachments table	

	PT-300 TIER 3 / STAGE III A	PT-300 TIER 4 FINAL / STAGE V
Engine Gross Power	275 hp	302 hp
Engine Emission	U.S. EPA Tier 3 / EU Stage III A	U.S. EPA Tier 4 Final / EU Stage V
Travel Pumps	2 - EP control - 78 cc - Danfoss	2 - EP control - 78 cc - Danfoss
Travel Motors	2 - HY control - 80 cc - Danfoss	2 - HY control - 80 cc - Danfoss
Max Travel Pressure	420 Bar	420 Bar
Attachment Pump	1 - EP control - 130 cc - Danfoss	1 - EP control - 147 cc - Danfoss
Max Mulcher Pressure	350 Bar	350 Bar
Hydraulic Oil Tank Capacity	320 L	320 L
Fuel Tank Capacity	380 L	380 L
DEF AdBlue® Tank	-	16 L
Track Chain	171 Pitch - Lubricated - Berco	171 Pitch - Lubricated - Berco
Lower Rollers	6 + 6 Single Flange + 3 + 3 Double Flange	6 + 6 Single Flange + 3 + 3 Double Flange
Carrier Rollers	2 + 2	2 + 2
Voltage	24 volt	24 volt
Max forward speed	6,5 Km/h	6,5 Km/h
Max reverse speed	6,5 Km/h	6,5 Km/h
Gradeability	45° vertical, 35° lateral	45° vertical, 35° lateral
Configuration tracks	660 mm pads (single grouser) 800 mm pads (single or double grouser)	660 mm pads (single grouser) 800 mm pads (single or double grouser)
Operating weight	10980 Kg (std equipment, 660 mm pads) 11580 Kg (std equipment, 800 mm pads DG)	11230 Kg (std equipment, 660 mm pads) 11830 Kg (std equipment, 800 mm pads DG)
Ground Pressure	0,28 Kg/cm² (std equipment / 800 mm pads DG / 200/U-225)	0,29 Kg/cm² (std equipment / 800 mm pads DG / 200/U-225)

ATTACHMENT

MODEL	200/U - 200	200/U - 210	200/U - 225	300/U - 200
Head type	Mulcher	Mulcher	Mulcher	Mulcher
Working width (mm)	2064	2150	2304	2064
Total width (mm)	2464	2560	2704	2494
Weight (kg)	2960	2820	3120	3400
Hydraulic motor type	2x - VT - 110 cc Danfoss	2x - VT - 110 cc Danfoss	2x - VT - 110 cc Danfoss	2x - VT - 110 cc Danfoss
Rotor diameter (mm)	500	500	500	595
Max shredding diameter (mm)	350	350	350	400
No. teeth type B/3 + C/3/SS	-	-	-	72+2
type C/3+C/3/SS	42+2	44+2	46+2	44+2

MODEL	200/S - 200	200/S - 225	200/S - 250	300/SC	RSL/PM- 200	RSL/PM- 225
Head type	Tiller	Tiller	Tiller	Stump cutter	Stone crusher	Stone crusher
Working width (mm)	2080	2320	2560	156	1960	2200
Total width (mm)	2420	2662	2902	700	2360	2560
Weight (kg)	2950	3162	3400	2100	3360	3560
Hydraulic motor type	2x - 180 cc Bosch Rexroth	2x - 180 cc Bosch Rexroth	2x - 180 cc Bosch Rexroth	1x - 250 cc Danfoss	2x - 250 cc Danfoss	2x - 250 cc Danfoss
Rotor diameter (mm)	590	590	590	1020	600	600
Max working depth (mm)	300	300	300	1000	270	270
Max shredding diameter (mm)	300	300	300	500	150	150
No. teeth type B/3+C/SS	74+4	82+4	96+4	-	-	-
type M1+M2+M3+M4	-	-	-	24+4+24+4	-	-
type R+R/HD 65	-	-	-	-	154+16	154 +16
type G3+STC/3/FP	74+4	82+4	96+4	-	72+6	72+6

TEETH

200/U	300/U	200/S	RSL/PM	300/SC		
ROTOR C	ROTOR C	ROTOR B	ROTOR B	ROTOR R	ROTOR G	ROTOR DISC
C/3 (standard)	C/3 (standard)	B/3 (standard)	B/3 (standard)	R65 (standard)	G/3 (standard)	M1, M2, M3, M4 (standard)
C/3 HD (option)	C/3 HD (option)	B/3 HD (option)	B/3 HD (option)	R/HD 65 (option)	G/3 HD (option)	
K/3 (option)	K/3 (option)		G/3 (option)	Adapter R65/R44 (option)	Adapter C/3/R44 (option)	
BL Blade (optional)			G/3 HD (option)			
STCL/3						
C/3/SS (side scraper)	C/3/SS (side scraper)	C/3/SS (side scraper)	C/3/SS (side scraper)	R/HD 65 (side scraper)	STC/3/FP (side scraper)	

OPTIONS

OPTIONS

Rear winch - rated towing capacity: 6t	Oil top-off pump (service package)
Canopy	Chain guides
Floating lift system	Rock guards
Cabin pressurization system	Proportional and reversible radiator fan
Protective windshield grill	Ejector (heavy duty filtration package)
Air-window cleaning system	Drainage filter (heavy duty filtration package)
Rear view camera with additional LCD display (visibility package)	Pre-heating system for engine and hydraulic oil
Additional lighting package (visibility package)	Air shut-off system
Service light (visibility package)	Automatic fire suppression system



Rear view camera with additional LCD display (visibility package)



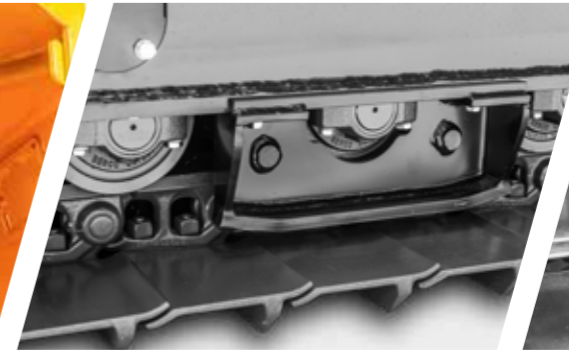
Additional lighting package (visibility package)



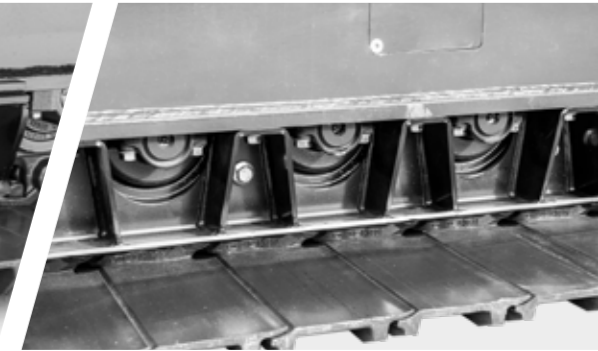
Service light (visibility package)



Oil top-off pump (service package)



Chain guides



Rock guards



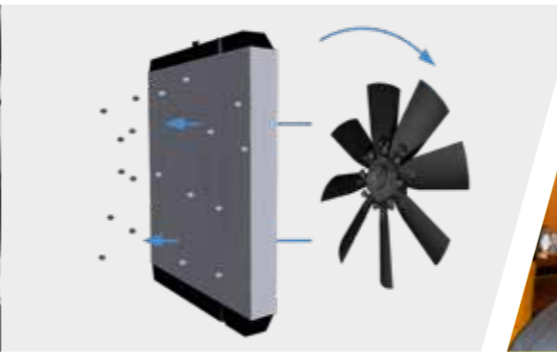
Rear winch - rated towing capacity: 6t



Canopy



Floating lift system



Proportional and reversible radiator fan



Ejector (heavy duty filtration package)



Drainage filter (heavy duty filtration package)



Cabin pressurization system



Protective windshield grill



Air-window cleaning system



Pre-heating system for engine and hydraulic oil



Air shut-off system



Automatic fire suppression system

FAE PT-475

THE TRACKED CARRIER FOR BIG CHALLENGES.

The FAE PT-475 is the perfect tracked carrier for major work in wooded areas and forests or along oil and gas pipelines. The sturdy construction with oscillating undercarriage can be equipped with forestry mulchers, stump cutters or the SFH/PM multitask head for crushing stone and tilling soil. The amazing power of the CAT C13 Acert straight-six engine lets you work on soft, uneven and swampy ground. The hydraulic system guarantees reliability and efficiency. The spacious cab is unrivaled when it comes to comfort, ergonomics and operator safety.

POWERFUL

The strength and reliability of the Caterpillar C13 six-cylinder engine. Supplies 475 hp in the Tier 4 Final/Stage V and Tier 3/Stage III A versions. Always top-notch performance supported by a global service network.

UNSTOPPABLE

Working on vast terrains with soft, uneven or swampy ground is the norm for the FAE PT-475. Longitudinal slopes of 45° and transverse slopes of 35°. High power and minimum ground pressure of 0.37 kg/cm².

TECHNOLOGICAL

High-tech body and soul. An integrated system developed by FAE to ensure maximum performance. With a network of sensors to monitor key operating parameters, everything in the PT-475 can be easily fine-tuned.

COMFORTABLE

Designed with total operator comfort in mind. ROPS/FOPS/OPS cabs - the industry benchmark. High Lexan™ windows. Ergonomic joysticks. Pneumatic seat. 7" color display to monitor and modify all operating functions.



VERSATILE

The FAE PT-475 is perfect for working in large woods or forests or along oil and gas pipelines. It can be paired with forestry mulchers, stump cutters or the SFH/PM multitask head for crushing stones and tilling soil. The SFH/PM head can also be combined with the floating function to ensure that the unit always follows the contours of the ground closely.

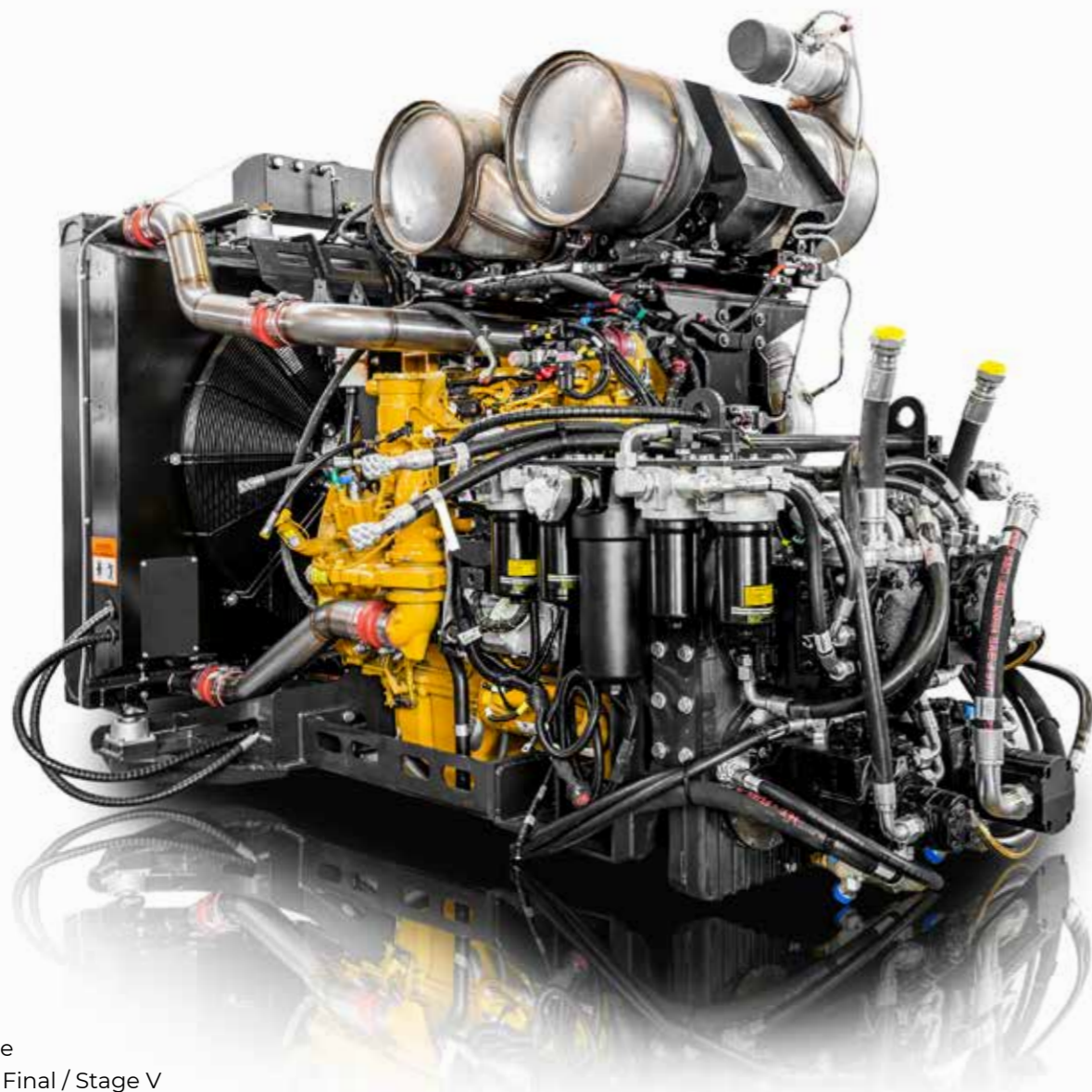
AN ENGINE THAT'S ALWAYS READY TO GO.

The **Caterpillar C13 Acert** six-cylinder engine in the FAE PT-475 guarantees strength, reliability and global support. Equipped with a turbocharger with after cooler and Acert technology, the Tier 4 Final/Stage V version of this engine delivers a full 475 hp. Efficient, powerful, with superb consumption/power ratio.

Compliance with the **Tier 4 Final/Stage V** standard is guaranteed with the combination of diesel particulate

filter (DPF), selective catalytic reduction (SCR) and diesel oxidation catalyst (DOC) technologies. The FAE PT-475 is also available in a **Tier 3/Stage III A** version for emission-free markets, rated at 475 hp.

The large, 12.5-liter displacement and a cooling system designed specifically for the FAE PT-475 ensure that both configurations offer peak performance in heavy-duty applications and when working in tropical climates.

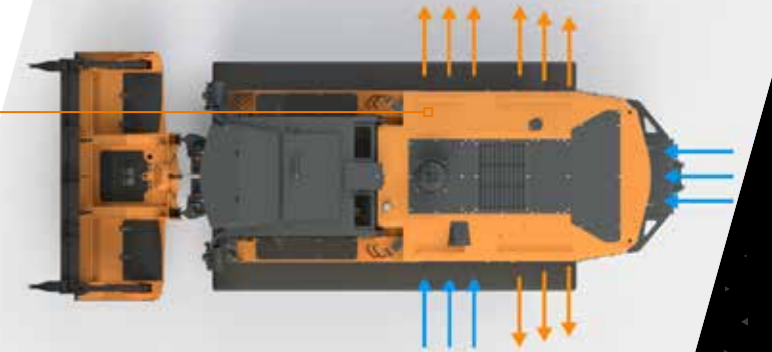


Engine
Tier 4 Final / Stage V

The simple, uncluttered **internal layout** is synonymous of reliability



Optimized airflow for working in extreme conditions



Easy access to **filters** makes maintenance quick and easy



EFFICIENT, RELIABLE TRANSMISSION.

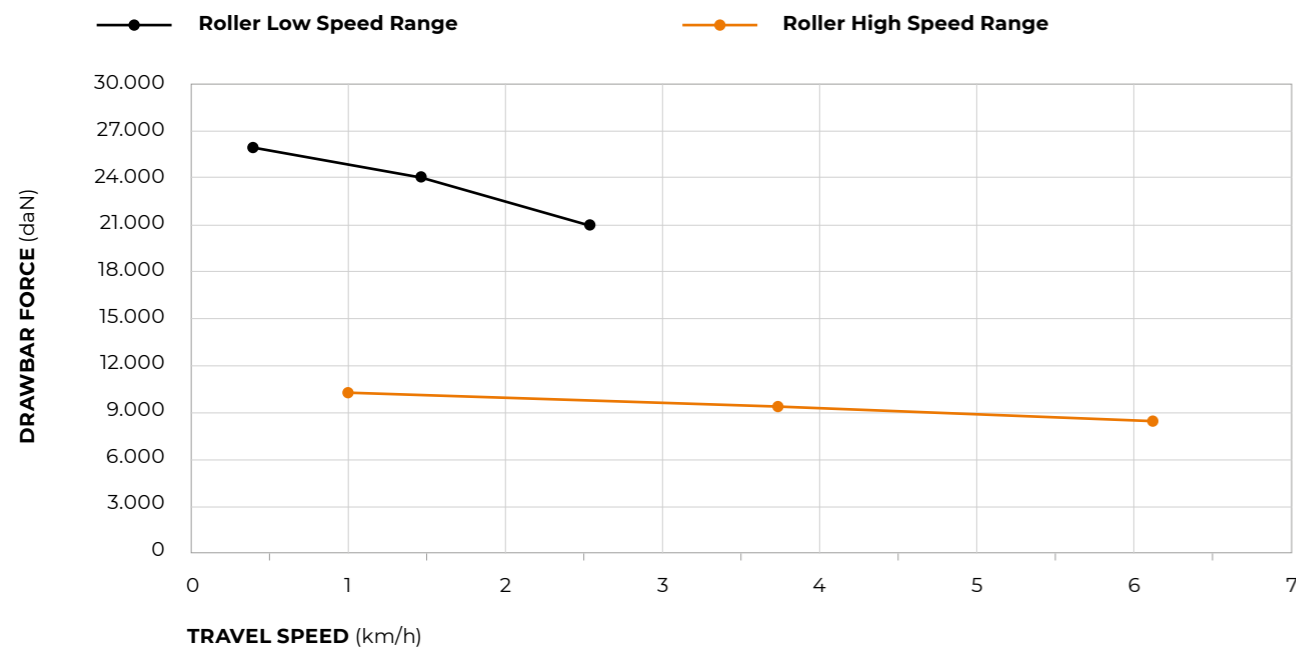
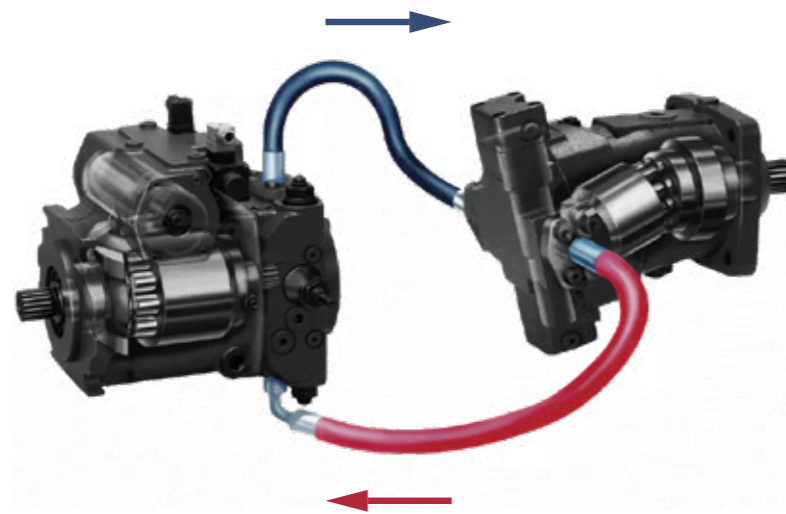
The transmissions designed for the FAE PT-475 are based on two fundamental concepts: technology and integration. **Electronically-controlled pumps and sensors and a dedicated control unit**, working together to deliver maximum performance. The systems are designed to enable the CAT C13 Acert engine to operate at optimal rpms at all times.

The FAE PT-475's **hydrostatic transmission** also serves to dampen operating loads. This ensures that the carrier and its key components are subjected to less stress, reducing wear and tear. The end result is greater durability than a mechanical transmission.

The FAE PT-475's **optional load control feature** optimizes power management, ensuring that the mulcher always operates at peak power while reducing forward speed as needed.

An added benefit of the FAE PT-475's hydrostatic transmission is its ability to accommodate a **wide variety of FAE equipment**: forestry mulchers, stump cutters or the SFH/PM multitask head for crushing stone and tilling soil.

Diagram of the FAE PT-475 **hydrostatic transmission**: simple and effective



NOTE: Usable force will depend upon: machine weight, permitted traction, working duty cycle



- 1 Windshield wipers / Pneumatic cleaning system activation
- 2 High gear selector
- 3 Low gear selector
- 4 Variable gear speed increase / decrease
- 5 Horn

The traction force can be controlled precisely and safely with the **trackball on the joystick**

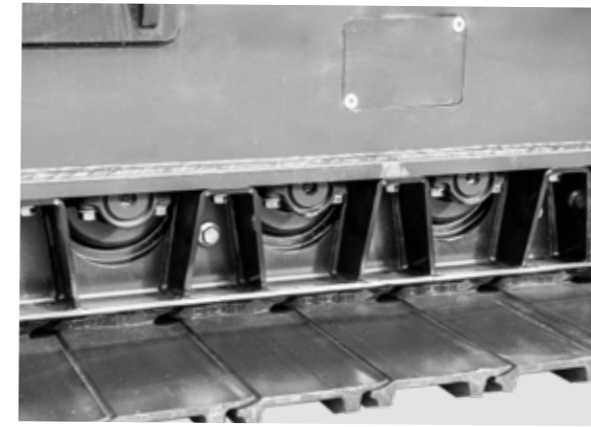
HEAVY DUTY UNDERCARRIAGE.

The FAE PT-475 undercarriage is designed to provide maximum operating performance and reliability, even in the most demanding conditions.

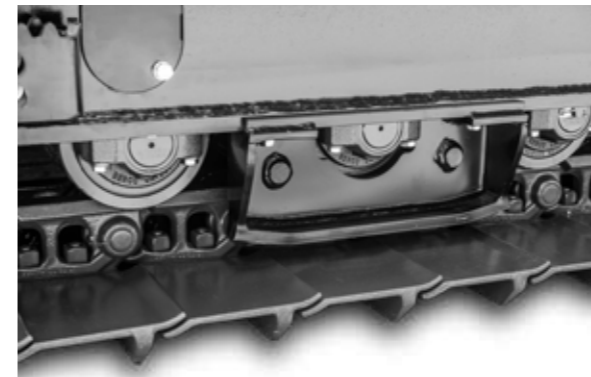
Prime quality **Berco components**. Chains with lifetime lubrication offer longer life than conventional chains as well as greater operator comfort. Solid, reliable dozer-type rollers. Oscillating undercarriage technology for superior traction and comfort. Two options available for roller guards to better adapt to different working environments.

Conventional geometry ensures a **low center of gravity** and provides **optimal contact between chain and drive wheel**. Two fundamental elements for the best possible work, even on slopes. The FAE PT-475 wheelbase also extends the area over which the load is distributed, which means **lower specific pressure against the ground**.

The frames of the PT-475 undercarriage are designed to withstand major stresses and make maintenance easier.



Solid **rock guards**



Chain **guide**

3 **slide** configurations to adapt to any terrain



Double grouser - **900 mm**



Single grouser - **600 mm**



Oscillating **undercarriage technology** boosts grip and comfort

A SERIOUSLY COMFORTABLE CAB.

The cab of the FAE PT-475 is designed for those who work in extreme conditions. It is ergonomic, soundproof and guarantees optimal visibility, making it an industry benchmark.

Joysticks built into the pneumatic suspension seat allow for easy, precise operation of the PT-475. The controls on the side console are distributed to make them user friendly, and the 7" color display keeps the essential carrier parameters in view at all times.

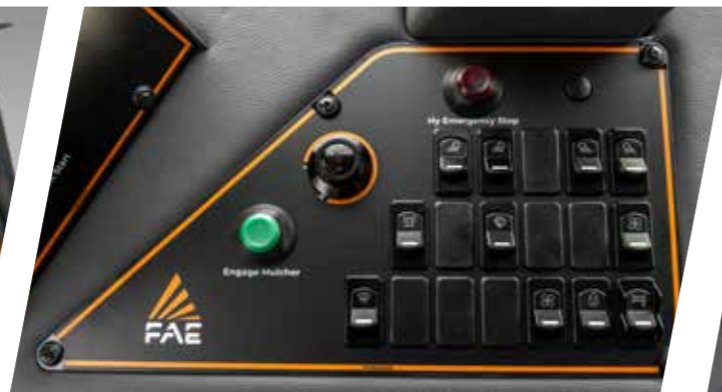
ROPS/FOPS/OPS certification meets the highest standards of operator safety,

even in the most demanding applications. The air conditioning system vents located throughout the cabin provide all the comfort the operator needs, in hot or cold weather. An optional **cabin pressurization system** is also available.

The large, 12-mm thick, impact and scratch-resistant **Lexan™ windows** provide excellent visibility. Powerful LED work lights offer broad coverage, ensuring precise, safe work in all conditions.



7" electronic color **display**



User-friendly side **console**



Powerful **air conditioning system**



Optional **rear view camera**



Each and every item in the cabin has been carefully **designed with ergonomics in mind.**

EASY TO USE, EASY TO MAINTAIN.

Everything about the FAE PT-475 is designed to be effortless, from operation to maintenance.

Large doors with shock-resistant closures make accessing the engine compartment easy. The compartment is also protected by micro-perforated plates that prevent material from getting inside.

Accessing the filters, tanks and hydraulic system components is easier with the large engine compartment and its organized interior layout. The large doors and **tilting cab** ensure easy maintenance, whether checking fluid levels or running routine checks and more. A **powerful air compressor comes standard for daily cleaning**. In addition,

a **heavy duty kit** can be installed for an extra degree of air filtration and boosting the life of the engine air filter.

The PT-475's efficient cooling system comes standard with a **dedicated diesel engine radiator and a second radiator for the hydraulic system**, built into the door to provide easy access to the engine compartment. Both

radiators feature anti-clogging fins specially designed by FAE. It can also be integrated with reversible, proportional fans that ensure peak performance and maximize radiator core cleanliness. In fact, the fans are regulated by the machine's control unit, adjusting the tilt of the blades according to the operating temperature. This optimizes airflow and also saves fuel.



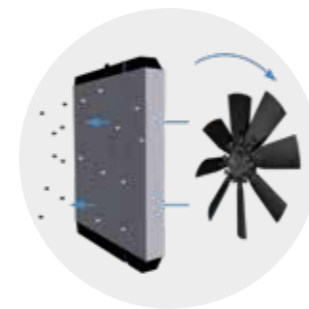
Level control is simplified by an organized layout (1)



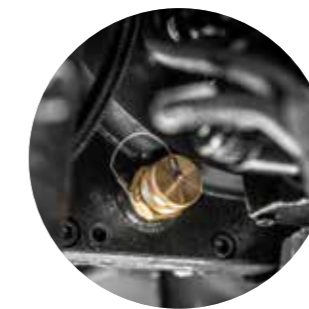
The **large rear doors** have safety catches (2)



Fluid level indicators are clear and easy to locate (3)



A **reversible fan** maximizes radiator efficiency (4)



Couplings make it possible to quickly **drain fluids** without leaks (5)



The **air compressor** makes daily cleaning easier



FORESTRY MULCHERS FOR SPECIAL VEHICLES

300/U

Heavy duty hydraulic mulcher for higher horse power carriers.

The 300/U mulcher is highly productive, strong, and lightweight, with a fixed-teeth rotor that lets it mulch plants and trunks up to 40 cm in diameter. It may be customized to meet specific needs.



Ø 40 cm max



FORESTRY MULCHERS FOR SPECIAL VEHICLES

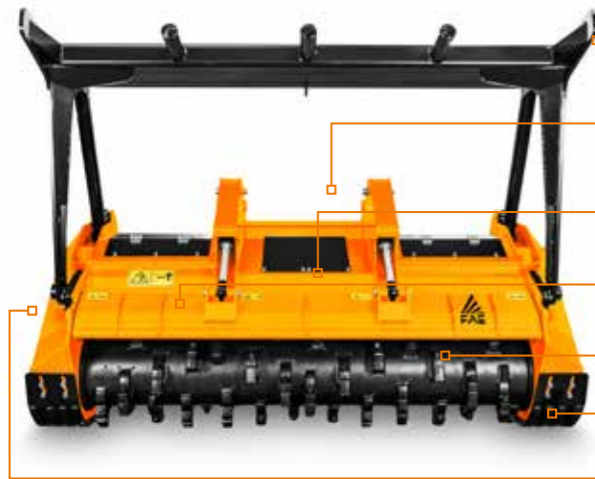
500/U

Heavy duty hydraulic mulcher for higher horse power carriers.

The 500/U forestry mulcher is the top of the line for special vehicles, capable of mulching logs up to 50 cm in diameter. The transmission is rated for use up to 600 hp, so it can work with the most powerful vehicles on the market.



Ø 50 cm max



Mechanical or hydraulic push frame (optional)

Customized attachment plates

Hydraulically controlled hood to adjust final product size

Ripper teeth on hydraulic hood (optional)

Multiple tooth options

Adjustable skids

Customized hydraulic transmission



Mechanical or hydraulic push frame (optional)

Customized attachment plates

Hydraulically controlled hood to adjust final product

Ripper teeth on hydraulic hood (optional)

Multiple tooth options

Adjustable skids

Customized hydraulic transmission

MODEL	300/U 225	300/U 250
Head type	Mulcher	Mulcher
Working width (mm)	2304	2544
Total width (mm)	2734	2974
Weight (kg)	3700	3900
Hydraulic motor type	2x - VT - 110 cc Danfoss	2x - VT - 110 cc Danfoss
Rotor diameter (mm)	595	595
Max shredding diameter (mm)	400	400
No. teeth type B/3 + C/3/SS	80+2	92+2
type C/3+C/3/SS	50+2	50+2

Data refers to machine as standard. The technical data in this catalogue may be altered without prior notice.

MODEL	500/U 225	500/U 250
Head type	Mulcher	Mulcher
Working width (mm)	2320	2560
Total width (mm)	2805	3045
Weight (kg)	4000	4200
Hydraulic motor type	2x - VT - 200 cc Bosch Rexroth	2x - VT - 200 cc Bosch Rexroth
Rotor diameter (mm)	700	700
Max shredding diameter (mm)	500	500
No. teeth type A/3+MH	88+2	96+2
type C/3+C/3/SS	54+2	60+2

Data refers to machine as standard. The technical data in this catalogue may be altered without prior notice.

ROTOR TYPE B



B/3 (standard)



B/3/HD (option)



C/3 (standard)



C/3/HD (option)



K/3 (option)



C/3/SS (left/right side scraper)

ROTOR TYPE C

ROTOR TYPE A



A/3 (standard)



A/3/HD (option)



MH (side scraper)



C/3 (standard)



C/3/HD (option)



K/3 (option)



C/3/SS (left/right side scraper)

ROTOR TYPE C

MULTITASKS FOR SPECIAL VEHICLES

SFH/PM

Hydraulic multitask stone crusher, forestry tiller and mulcher.

The SFH/PM head works with special vehicles up to 450 hp. It shreds logs or stumps and crushes stones up to 40 cm deep. Its double-gear transmission increases shredding power.



Ø 35 cm max (stones)

Ø 45 cm max (trees)

Ø 55 cm max (stump)



Depth 40 cm



STUMP CUTTERS FOR SPECIAL VEHICLES

500/SC

Hydraulic stump cutters for higher horse power carriers.

The 500/SC can shred large stumps and roots up to 60 cm in diameter and 105 cm deep. The belt drive guarantees uniform shredding depth and less tooth wear with every use.



Ø 60 cm max



Depth 105 cm



Customized attachment plate (optional)

Hydraulically controlled hood to adjust final product

Dual transmission with side gearbox converts RPM to Power



Hydraulic motor with relief valve

Larger cylinders for side swing

Single belt transmission

Bolt-on chains/protection plates deflects debris

MODEL	SFH/PM 225	SFH/PM 250
Head type	Multitask	Multitask
Working width (mm)	2320	2560
Total width (mm)	2710	2950
Weight (kg)	6000	6350
Hydraulic motor type	2x - 200 cc Bosch Rexroth	2x - 250 cc Danfoss
Rotor diameter (mm)	900	900
Max working depth stones (mm)	350	350
trees (mm)	540	540
Max shredding diameter stones (mm)	350	350
trees (mm)	450	450
No. teeth type G/3 - STC/FP	62+4+4	62 + 4 + 4

Data refers to machine as standard. The technical data in this catalogue may be altered without prior notice.

MODEL	500/SC
Head type	Stump cutter
Working width (mm)	413
Total width (mm)	880
Weight (kg)	3300
Hydraulic motor type	2x - 200 cc Bosch Rexroth
Rotor diameter (mm)	1200
Max shredding diameter (mm)	600
No. teeth type M1+M2+M3+M4	30+10+30+10

Data refers to machine as standard. The technical data in this catalogue may be altered without prior notice.

ROTOR TYPE G



G/3 (standard)



G/3/HD (option)



STC/FP (side scraper)

ROTOR DISC



M1 (standard)



M3 (standard)



M4 (standard)



M2 (standard)

PT-475

TECHNICAL SPECIFICATIONS.

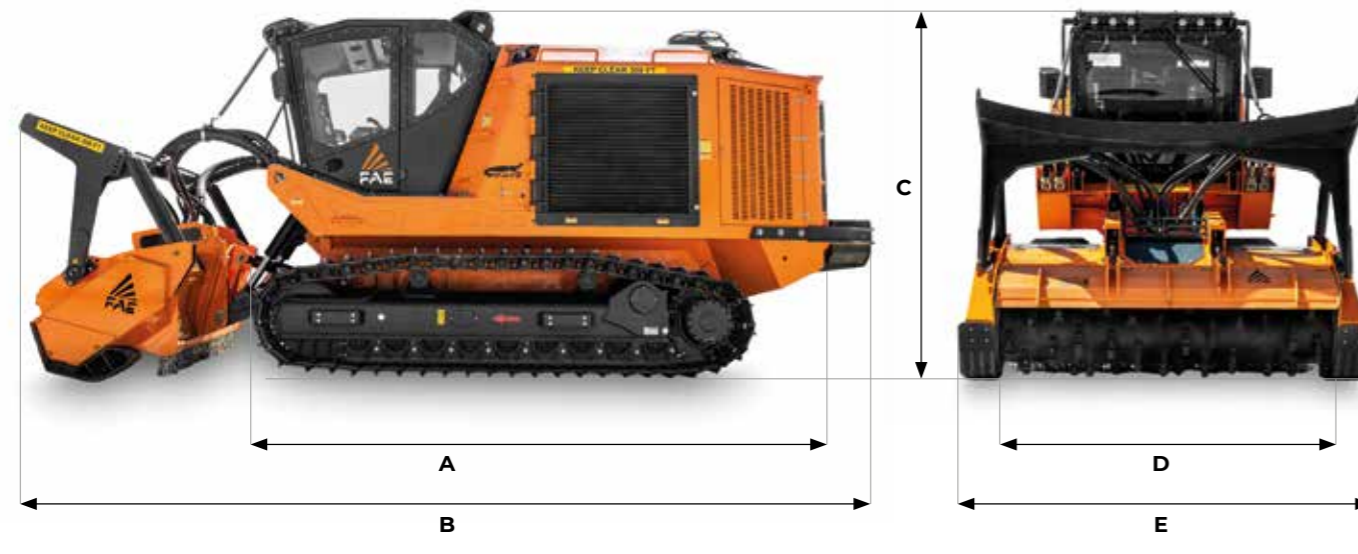


475 hp | TIER 4 FINAL / STAGE V
TIER 3 / STAGE III A

STANDARD EQUIPMENT

After-treatment system DOC/DPF/SCR	Comfort driver's seat (heated and air suspended)
Engine CAT C13 Acert turbocharged and after-cooled	Ergonomic joysticks controls
Hydrostatic tracks transmission	Heating & Air conditioning systems
Hydrostatic attachments transmission	Lexan® cabin windshields (full equipped 12 mm)
H-frame with fixed pin attach system	Cabin air filtration dust proofing
Oscillating undercarriage	LCD color 7" display
Track chains lubricated, dozer-style rollers	MP3/CD bluetooth radio player
Engine aluminum cooler anti-clogging fins style	LED working lights
Hydraulic Oil aluminum cooler anti-clogging fins style	Air compressor system
Cabin ROPS/FOPS/OPS-approved	Air Shut Off Valve

DIMENSIONS



A Overall length without attachment	5860 mm	C Max height	3300 mm
B Transport length with 300(U attachment on ground and winch	8200 mm	D Overall track width	2550 mm (600 mm pads) 2850 mm (900 mm pads)
		E See attachments table	

PT-475 TIER 3 / STAGE III A

Engine Gross Power	475 hp	475 hp
Engine Emission	U.S. EPA Tier 3 / EU Stage III A	U.S. EPA Tier 4 Final / EU Stage V
Travel Pumps	2 - EP control - 100 cc - Danfoss	2 - EP control - 100 cc - Danfoss
Travel Motors	2 - HY control - 160 cc - Danfoss	2 - HY control - 160 cc - Danfoss
Max Travel Pressure	420 Bar	420 Bar
Attachment Pump	2 - EP control - 130 cc - Danfoss	2 - EP control - 130 cc - Danfoss
Max Mulcher Pressure	350 Bar	350 Bar
Hydraulic Oil Tank Capacity	480 L	480 L
Fuel Tank Capacity	790 L	790 L
DEF AdBlue® Tank	-	35 L
Track Chain	190 Pitch - Lubricated - Berco	190 Pitch - Lubricated - Berco
Lower Rollers	6 + 6 Single Flange + 3 + 3 Double Flange	6 + 6 Single Flange + 3 + 3 Double Flange
Carrier Rollers	2 + 2	2 + 2
Voltage	24 volt	24 volt
Max forward speed	6 Km/h	6 Km/h
Max reverse speed	6 Km/h	6 Km/h
Gradeability	45° vertical, 35° lateral	45° vertical, 35° lateral
Configuration tracks	600 mm pads (single grouser) 900 mm pads (double grouser)	600 mm pads (single grouser) 900 mm pads (double grouser)
Operating weight	19900 Kg (std equipment, 600 mm pads) 21000 Kg (std equipment, 900 mm pads)	20400 Kg (std equipment, 600 mm pads) 21500 Kg (std equipment, 900 mm pads)
Ground Pressure	0,37 Kg/cm² (std equipment / 900 mm pads / 300/U-250)	0,38 Kg/cm² (std equipment / 900 mm pads / 300/U-250)

PT-475 TIER 4 FINAL / STAGE V

ATTACHMENT

MODEL	300/U 225	300/U 250	500/U 225	500/U 250	500/SC
Head type	Mulcher	Mulcher	Mulcher	Mulcher	Stump cutter
Working width (mm)	2304	2544	2320	2560	413
Total width (mm)	2734	2974	2805	3045	880
Weight (kg)	3700	3900	4000	4200	3300
Hydraulic motor type	2x - VT - 110 cc Danfoss	2x - VT - 110 cc Danfoss	2x - VT - 200 cc Bosch Rexroth	2x - VT - 200 cc Bosch Rexroth	2x - 200 cc Bosch Rexroth
Rotor diameter (mm)	595	595	700	700	1200
Max shredding diameter (mm)	400	400	500	500	600
No. teeth type A/3+MH	-	-	88+2	96+2	-
type B/3 + C/3/SS	80+2	92+2	-	-	-
type C/3+C/3/SS	50+2	50+2	54+2	60+2	-
type M1+M2+M3+M4	-	-	-	-	30+10+30+10

MODEL	SFH/PM 225	SFH/PM 250
Head type	Multitask	Multitask
Working width (mm)	2320	2560
Total width (mm)	2710	2950
Weight (kg)	6000	6350
Hydraulic motor type	2x - 200 cc Bosch Rexroth	2x - 200 cc Bosch Rexroth
Rotor diameter (mm)	900	900
Max working depth stones (mm)	350	350
trees (mm)	540	540
Max shredding diameter stones (mm)	350	350
trees (mm)	450	450
No. teeth type G/3 - STC/3/FP	62+4+4	68+4+4
type G/3 - STC/FP	62+4+4	62+4+4

TEETH

300/U		500/U				SFH/PM	
ROTOR C	ROTOR G	ROTOR STONES	ROTOR B	ROTOR C	ROTOR STONES	ROTOR A	ROTOR G
C/3 (standard)	G/3 (standard)	STC/3 (standard)	B/3 (standard)	C/3 (standard)	STC/3 (standard)	A/3 (standard)	G/3 (standard)
C/3 HD (option)	G/3 HD (option)	STC/3/HD (option)	B/3 HD (option)	C/3 HD (option)	STC/3/HD (option)	A/3 HD (standard)	G/3 HD (option)
K/3 (option)		STC/3/FP (option)		K/3 (option)	STC/3/FP (option)		
C/3/SS (side scraper)	STC/3/HD (side scraper)	STC/3/FP (side scraper)	C/3/SS (side scraper)	C/3/SS (side scraper)	STC/FP (side scraper)	M-H (side scraper)	STC/3/FP - STC/FP (side scraper)

OPTIONS

OPTIONS

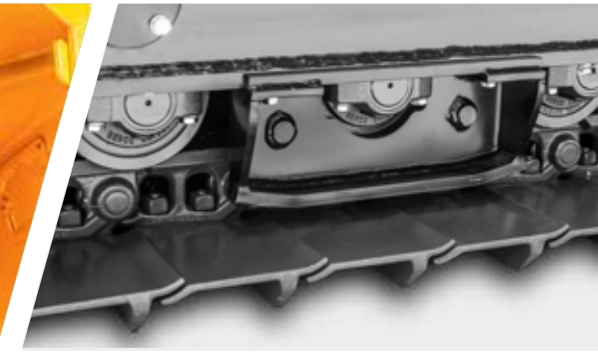
Rear winch - rated towing capacity: 13 t	Chain guides
Cabin pressurization system	Rock guards
Protective windshield grill	Proportional and reversible radiator fan
Air-window cleaning system	Ejector (heavy duty filtration package)
Rear view camera with additional LCD display (visibility package)	Pre-heating system for engine and hydraulic oil
Additional lighting package (visibility package)	Air shut-off system
Service light (visibility package)	Automatic fire suppression system
Oil top-off pump (service package)	Load control



Service light (visibility package)



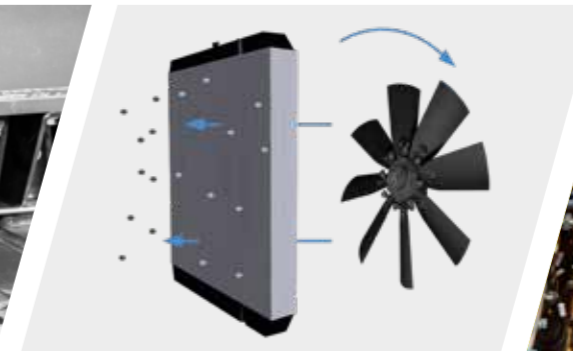
Oil top-off pump (service package)



Chain guides



Rock guards



Proportional and reversible radiator fan



Ejector (heavy duty filtration package)



Rear winch - rated towing capacity: 13t



Cabin pressurization system



Protective windshield grill



Pre-heating system for engine and hydraulic oil



Air shut-off system



Automatic fire suppression system



Air-window cleaning system



Rear view camera with additional LCD display (visibility package)



Additional lighting package (visibility package)

RIGHT TO THE HEART OF THE POWER

The spiral rotor design reduces the power requirement



MORE CONSISTENT FINAL PRODUCT SIZING



LESS FUEL CONSUMPTION



HIGHER PRODUCTIVITY

1 / Forestry rotor type C/3



2 / Forestry rotor type A/3



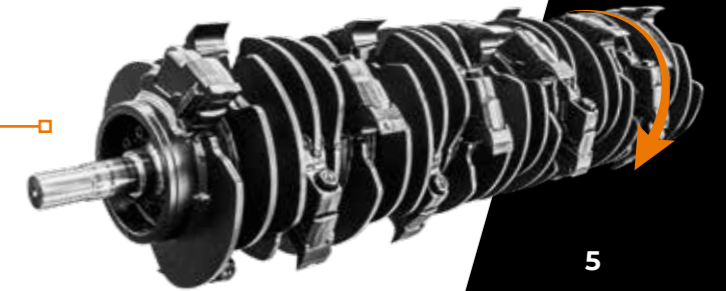
3 / Forestry rotor type B/3



4 / Forestry rotor / stone resistant



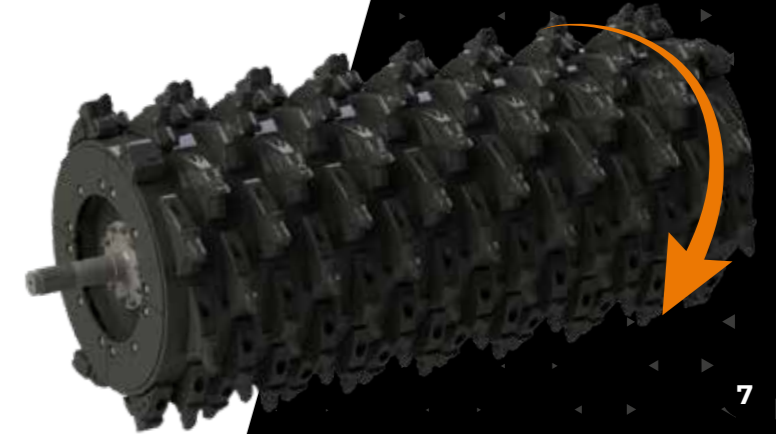
5 / Rotor Bite Limiter



6 / Disc stump cutter



7 / Rotor type G



8 / Rotor type R



ALWAYS BY
YOUR SIDE
TO **MAKE THE
DIFFERENCE**



